



Product Manual

## Barracuda 7200.10 Serial ATA

**ST3750640AS**

**ST3750840AS**

**ST3500630AS**

**ST3500830AS**

**ST3400620AS**

**ST3400820AS**

**ST3320620AS**

**ST3320820AS**

**ST3300620AS**

**ST3300820AS**

**ST3250620AS**

**ST3250820AS**

**ST3250410AS**

**ST3250310AS**

**ST3200820AS**

**ST3160815AS**

**ST3160310AS**

**ST3160215AS**

**ST3120815AS**

**ST3120215AS**

**ST380815AS**

**ST380215AS**

**ST340815AS**

**ST340215AS**

100402371  
Rev. K  
December 2007

## evision history

Revision	Date	Sheets affected or comments
Rev. A	05/01/06	Initial release.
Rev. B	07/20/06	1, 3, 14-15, 26-28, 33, 35 and 49
Rev. C	08/14/06	10, 12, 14, 16, 19 and 27-28.
Rev. D	09/26/06	Added 160 - 40GB models
Rev. E	10/04/06	19, 21, 23, 25 and 35
Rev. F	05/04/07	Front cover, 1, 3, 14-15, 26-29, 33, 35, 38, 41-42, 49 and 53-56.
Rev. G	08/23/07	1.
Rev. H	09/06/07	4, 6, 8, 10, 12, 14-16, 27-28 and 35.
Rev. J	11/05/07	4, 6, 8, 10, 12, 14, 16, 18-25 and 27-29.
Rev. K	12/18/07	fc, 1, 3, 18, 26, 28, 35 and 51.

Copyright © 2006-2007 Seagate Technology LLC. All rights reserved. Printed in U.S.A.

Publication number: 100402371, Rev. K December 2007

Seagate, Seagate Technology and the Wave logo are registered trademarks of Seagate Technology LLC in the United States and/or other countries. Barracuda, SeaTools and SeaTDD are either trademarks or registered trademarks of Seagate Technology LLC or one of its affiliated companies in the United States and/or other countries. All other trademarks or registered trademarks are the property of their respective owners.

One gigabyte, or GB, equals one billion bytes when referring to hard drive capacity. Accessible capacity may vary depending on operating environment and formatting. Seagate reserves the right to change, without notice, product offerings or specifications.

# Contents

<b>1.0</b>	<b>Introduction</b>	<b>1</b>
1.1	About the Serial ATA interface	2
<b>2.0</b>	<b>Drive specifications</b>	<b>3</b>
2.1	Specification summary tables	3
2.2	Formatted capacity	26
2.2.1	LBA mode	26
2.3	Default logical geometry	26
2.4	Recording and interface technology	27
2.5	Physical characteristics	28
2.6	Seek time	29
2.7	Start/stop times	29
2.8	Power specifications	30
2.8.1	Power consumption	30
2.8.2	Conducted noise	31
2.8.3	Voltage tolerance	31
2.8.4	Power-management modes	32
2.9	Environmental specifications	33
2.9.1	Ambient temperature	33
2.9.2	Temperature gradient	33
2.9.3	Humidity	33
2.9.4	Altitude	33
2.9.5	Shock	33
2.9.6	Vibration	34
2.10	Acoustics	35
2.10.1	Test for Prominent Discrete Tones (PDTs)	35
2.11	Electromagnetic immunity	36
2.12	Reliability	37
2.12.1	Annualized Failure Rate (AFR) and Mean Time Between Failures (MTBF)	37
2.13	Agency certification	37
2.13.1	Safety certification	37
2.13.2	Electromagnetic compatibility	37
2.13.3	FCC verification	38
2.14	Environmental protection	39
2.14.1	European Union Restriction of Hazardous Substances (RoHS) Directive	39
2.14.2	China Restriction of Hazardous Substances (RoHS) Directive	39
2.15	Corrosive environment	39
<b>3.0</b>	<b>Configuring and mounting the drive</b>	<b>41</b>
3.1	Handling and static-discharge precautions	41
3.2	Configuring the drive	42
3.3	Serial ATA cables and connectors	42
3.4	Drive mounting	43
<b>4.0</b>	<b>Serial ATA (SATA) interface</b>	<b>45</b>
4.1	Hot-Plug compatibility	45
4.2	Serial ATA device plug connector pin definitions	46
4.3	Supported ATA commands	47
4.3.1	Identify Device command	49
4.3.2	Set Features command	53
4.3.3	S.M.A.R.T. commands	54
<b>5.0</b>	<b>Seagate Technology support services</b>	<b>55</b>



## List of Figures

Figure 1.	Typical 5V startup and operation current profile . . . . .	31
Figure 2.	Typical 12V startup and operation current profile . . . . .	31
Figure 3.	Serial ATA connectors . . . . .	42
Figure 4.	Attaching SATA cabling . . . . .	42
Figure 5.	Mounting dimensions for 750-200 GB models (except ST3250410AS and ST3250310AS) .	43
Figure 6.	Mounting dimensions for 160-40 GB models (including ST3250410AS and ST3250310AS)	44



## 1.0 Introduction

---

This manual describes the functional, mechanical and interface specifications for the following Seagate Barracuda® 7200.10 Serial ATA model drives:

ST3750640AS	ST3320620AS	ST3250410AS	ST3120815AS
ST3750840AS	ST3320820AS	ST3250310AS	ST3120215AS
ST3500630AS	ST3300620AS	ST3200820AS	ST380815AS
ST3500830AS	ST3300820AS	ST3160815AS	ST380215AS
ST3400620AS	ST3250620AS	ST3160310AS	ST340815AS
ST3400820AS	ST3250820AS	ST3160215AS	ST340215AS

These drives provide the following key features:

- 7,200 RPM spindle speed.
- High instantaneous (burst) data-transfer rates (up to 300 Mbytes per second).
- Perpendicular recording and Tunneling Magnetoresistive (TMR) recording heads for increased areal density.
- State-of-the-art cache and on-the-fly error-correction algorithms.
- Native Command Queueing with command ordering to increase performance in demanding applications.
- Full-track multiple-sector transfer capability without local processor intervention.
- Quiet operation.
- SeaTools diagnostic software performs a drive self-test that eliminates unnecessary drive returns.
- Support for S.M.A.R.T. drive monitoring and reporting.
- Supports latching SATA cables and connectors.

## 1.1 About the Serial ATA interface

The Serial ATA interface provides several advantages over the traditional (parallel) ATA interface. The primary advantages include:

- Easy installation and configuration with true plug-and-play connectivity. It is not necessary to set any jumpers or other configuration options.
- Thinner and more flexible cabling for improved enclosure airflow and ease of installation.
- Scalability to higher performance levels.

In addition, Serial ATA makes the transition from parallel ATA easy by providing legacy software support. Serial ATA was designed to allow you to install a Serial ATA host adapter and Serial ATA disc drive in your current system and expect all of your existing applications to work as normal.

The Serial ATA interface connects each disc drive in a point-to-point configuration with the Serial ATA host adapter. There is no master/slave relationship with Serial ATA devices like there is with parallel ATA. If two drives are attached on one Serial ATA host adapter, the host operating system views the two devices as if they were both “masters” on two separate ports. This essentially means both drives behave as if they are Device 0 (master) devices.

**Note.** The host adapter may, optionally, emulate a master/slave environment to host software where two devices on separate Serial ATA ports are represented to host software as a Device 0 (master) and Device 1 (slave) accessed at the same set of host bus addresses. A host adapter that emulates a master/slave environment manages two sets of shadow registers. This is not a typical Serial ATA environment.

The Serial ATA host adapter and drive share the function of emulating parallel ATA device behavior to provide backward compatibility with existing host systems and software. The Command and Control Block registers, PIO and DMA data transfers, resets, and interrupts are all emulated.

The Serial ATA host adapter contains a set of registers that shadow the contents of the traditional device registers, referred to as the Shadow Register Block. All Serial ATA devices behave like Device 0 devices. For additional information about how Serial ATA emulates parallel ATA, refer to the “Serial ATA: High Speed Serialized AT Attachment” specification. The specification can be downloaded from [www.serialata.org](http://www.serialata.org).



## 2.0 Drive specifications

---

Unless otherwise noted, all specifications are measured under ambient conditions, at 25°C, and nominal power. For convenience, the phrases *the drive* and *this drive* are used throughout this manual to indicate the following drive models:

ST3750640AS	ST3320620AS	ST3250410AS	ST3120815AS
ST3750840AS	ST3320820AS	ST3250310AS	ST3120215AS
ST3500630AS	ST3300620AS	ST3200820AS	ST380815AS
ST3500830AS	ST3300820AS	ST3160815AS	ST380215AS
ST3400620AS	ST3250620AS	ST3160310AS	ST340815AS
ST3400820AS	ST3250820AS	ST3160215AS	ST340215AS

### 2.1 Specification summary tables

The specifications listed in the following tables are for quick reference. For details on specification measurement or definition, see the appropriate section of this manual.

**Table 1: Drive specifications summary for 750 Gbyte models**

Drive specification	ST3750640AS	ST3750840AS
Formatted capacity (512 bytes/sector)*	750 Gbytes	
Guaranteed sectors	1,465,149,168	
Heads	8	
Discs	4	
Bytes per sector	512	
Default sectors per track	63	
Default read/write heads	16	
Default cylinders	16,383	
Recording density	769 kbits/in avg	
Track density	141 ktracks/in avg	
Areal density	109 Gbits/in <sup>2</sup> avg	
Spindle speed	7,200 RPM	
Internal data transfer rate	1,030 Mbits/sec max	
Sustained data transfer rate OD (read)	78 Mbytes/sec max	
I/O data-transfer rate	300 Mbytes/sec max	
ATA data-transfer modes supported	PIO modes 0–4 Multiword DMA modes 0–2 Ultra DMA modes 0–6	
Cache buffer	16 Mbytes	8 Mbytes
Height (max)	26.1 mm (1.028 inches)	
Width (max)	101.85 mm (4.010 inches)	
Length (max)	146.99 mm (5.787 inches)	
Weight (typical)	720 grams (1.59 lbs)	
Average latency	4.16 msec	
Power-on to ready	15 sec max	
Standby to ready	15 sec max	
Track-to-track seek time	<0.8 msec typical read; <1.0 msec typical write	
Average seek, read	<8.5 msec typical	
Average seek, write	<10.0 msec typical	
Startup current (typical) 12V (peak)	2.8 amps	
Voltage tolerance (including noise)	5V ± 5% 12V ± 10%	
Ambient temperature	0° to 60°C (operating) –40° to 70°C (nonoperating)	
Temperature gradient	20°C per hour max (operating) 30°C per hour max (nonoperating)	
Relative humidity	5% to 90% (operating) 5% to 95% (nonoperating)	
Relative humidity gradient	30% per hour max	
Wet bulb temperature	37.7°C max (operating) 37.7°C max (nonoperating)	
Altitude, operating	–60.96 m to 3,048 m (–200 ft. to 10,000+ ft.)	
Altitude, nonoperating (below mean sea level, max)	–60.96 m to 12,192 m (–200 ft. to 40,000+ ft.)	
Operational Shock	68 Gs at 2 msec max	
Non-Operational Shock	300 Gs at 2 msec max	

Drive specification	ST3750640AS	ST3750840AS
Vibration, operating	5–22 Hz: 0.25 Gs, Limited displacement 22–350 Hz: 0.50 Gs 350–500 Hz:: 0.25 Gs	
Vibration, nonoperating	5–22 Hz: 0.25 Gs, Limited displacement 22–350 Hz: 5.0 Gs 350–500 Hz:: 1.0 Gs	
Drive acoustics, sound power		
Idle**	2.8 bels (typical) 3.0 bels (max)	
Performance seek	3.7 bels (typical) 3.9 bels (max)	
Nonrecoverable read errors	1 per 10 <sup>14</sup> bits read	
Annualized Failure Rate (AFR)	0.34%	
Warranty	5 years on distribution units. To determine the warranty for a specific drive, use a web browser to access the following web page: <a href="http://www.seagate.com/support/service/">www.seagate.com/support/service/</a> From this page, click on the “Verify Your Warranty” link. You will be asked to provide the drive serial number, model number (or part number) and country of purchase. The system will display the warranty information for your drive.	
Contact start-stop cycles	50,000 at 25°C, 50% rel. humidity	
Supports Hotplug operation per the Serial ATA Revision 2.5 specification	Yes	

\*One Gbyte equals one billion bytes when referring to hard drive capacity. Accessible capacity may vary depending on operating environment and formatting.

\*\*During periods of drive idle, some offline activity may occur according to the S.M.A.R.T. specification, which may increase acoustic and power to operational levels.

**Table 2: Drive specifications summary for 500 Gbyte models**

Drive specification	ST3500630AS	ST3500830AS
Formatted capacity (512 bytes/sector)*	500 Gbytes	
Guaranteed sectors	976,773,168	
Heads	6	
Discs	3	
Bytes per sector	512	
Default sectors per track	63	
Default read/write heads	16	
Default cylinders	16,383	
Recording density	769 kbits/in avg	
Track density	141 ktracks/in avg	
Areal density	109 Gbits/in <sup>2</sup> avg	
Spindle speed	7,200 RPM	
Internal data transfer rate	1,030 Mbits/sec max	
Sustained data transfer rate OD (read)	72 Mbytes/sec max	
I/O data-transfer rate	300 Mbytes/sec max	
ATA data-transfer modes supported	PIO modes 0–4 Multiword DMA modes 0–2 Ultra DMA modes 0–6	
Cache buffer	16 Mbytes	8 Mbytes
Height (max)	26.1 mm (1.028 inches)	
Width (max)	101.85 mm (4.010 inches)	
Length (max)	146.99 mm (5.787 inches)	
Weight (typical)	635 grams (1.40 lbs)	
Average latency	4.16 msec	
Power-on to ready	15 sec max	
Standby to ready	15 sec max	
Track-to-track seek time	<0.8 msec typical read; <1.0 msec typical write	
Average seek, read	<8.5 msec typical	
Average seek, write	<10.0 msec typical	
Startup current (typical) 12V (peak)	2.8 amps	
Voltage tolerance (including noise)	5V ± 5% 12V ± 10%	
Ambient temperature	0° to 60°C (operating) –40° to 70°C (nonoperating)	
Temperature gradient (max)	20°C per hour (operating) 30°C per hour (nonoperating)	
Relative humidity	5% to 90% (operating) 5% to 95% (nonoperating)	
Relative humidity gradient	30% per hour max	
Wet bulb temperature (max)	37.7 °C (operating) 37.7 °C (nonoperating)	
Altitude, operating	–60.96 m to 3,048 m (–200 ft. to 10,000+ ft.)	
Altitude, nonoperating (below mean sea level, max)	–60.96 m to 12,192 m (–200 ft. to 40,000+ ft.)	
Operational Shock	68 Gs max at 2 msec	
Non-Operational Shock	300 Gs max at 2 msec	

Drive specification	ST3500630AS	ST3500830AS
Vibration, operating	5–22 Hz: 0.25 Gs, Limited displacement 22–350 Hz: 0.50 Gs 350–500 Hz:: 0.25 Gs	
Vibration, nonoperating	5–22 Hz: 0.25 Gs, Limited displacement 22–350 Hz: 5.0 Gs 350–500 Hz:: 1.0 Gs	
Drive acoustics, sound power		
Idle**	2.8 bels (typical) 3.0 bels (max)	
Performance seek	3.7 bels (typical) 3.9 bels (max)	
Nonrecoverable read errors	1 per 10 <sup>14</sup> bits read	
Annualized Failure Rate (AFR)	0.34%	
Warranty	5 years on distribution units. To determine the warranty for a specific drive, use a web browser to access the following web page: <a href="http://www.seagate.com/support/service/">www.seagate.com/support/service/</a> From this page, click on the "Verify Your Warranty" link. You will be asked to provide the drive serial number, model number (or part number) and country of purchase. The system will display the warranty information for your drive.	
Contact start-stop cycles	50,000 at 25°C, 50% rel. humidity	
Supports Hotplug operation per the Serial ATA Revision 2.5 specification	Yes	

\*One Gbyte equals one billion bytes when referring to hard drive capacity. Accessible capacity may vary depending on operating environment and formatting.

\*\*During periods of drive idle, some offline activity may occur according to the S.M.A.R.T. specification, which may increase acoustic and power to operational levels.

**Table 3: Drive specifications summary for 400 Gbyte models**

Drive specification	ST3400620AS	ST3400820AS
Formatted capacity (512 bytes/sector)*	400 Gbytes	
Guaranteed sectors	781,422,768	
Heads	5	
Doscs	3	
Bytes per sector	512	
Default sectors per track	63	
Default read/write heads	16	
Default cylinders	16,383	
Recording density	769 kbits/in avg	
Track density	141 ktracks/in avg	
Areal density	109 Gbits/in <sup>2</sup> avg	
Spindle speed	7,200 RPM	
Internal data transfer rate	1,030 Mbits/sec max	
Sustained data transfer rate OD (read)	72 Mbytes/sec max	
I/O data-transfer rate	300 Mbytes/sec max	
ATA data-transfer modes supported	PIO modes 0–4 Multiword DMA modes 0–2 Ultra DMA modes 0–6	
Cache buffer	16 Mbytes	8 Mbytes
Height (max)	26.1 mm (1.028 inches)	
Width (max)	101.85 mm (4.010 inches)	
Length (max)	146.99 mm (5.787 inches)	
Weight (typical)	635 grams (1.40 lbs)	
Average latency	4.16 msec	
Power-on to ready	15 sec max	
Standby to ready	15 sec max	
Track-to-track seek time	<0.8 msec typical read; <1.0 msec typical write	
Average seek, read	<8.5 msec typical	
Average seek, write	<10.0 msec typical	
Startup current (typical) 12V (peak)	2.8 amps	
Voltage tolerance (including noise)	5V ± 5% 12V ± 10%	
Ambient temperature	0° to 60°C (operating) –40° to 70°C (nonoperating)	
Temperature gradient	20°C per hour max (operating) 30°C per hour max (nonoperating)	
Relative humidity	5% to 90% (operating) 5% to 95% (nonoperating)	
Relative humidity gradient	30% per hour max	
Wet bulb temperature	37.7 °C max (operating) 37.7 °C max (nonoperating)	
Altitude, operating	–60.96 m to 3,048 m (–200 ft. to 10,000+ ft.)	
Altitude, nonoperating (below mean sea level, max)	–60.96 m to 12,192 m (–200 ft. to 40,000+ ft.)	
Operational Shock	68 Gs max at 2 msec	
Non-Operational Shock	300 Gs max at 2 msec	

Drive specification	ST3400620AS	ST3400820AS
Vibration, operating	5–22 Hz: 0.25 Gs, Limited displacement 22–350 Hz: 0.50 Gs 350–500 Hz:: 0.25 Gs	
Vibration, nonoperating	5–22 Hz: 0.25 Gs, Limited displacement 22–350 Hz: 5.0 Gs 350–500 Hz:: 1.0 Gs	
Drive acoustics, sound power		
Idle**	2.7 bels (typical) 2.9 bels (max)	
Performance seek	3.4 bels (typical) 3.6 bels (max)	
Nonrecoverable read errors	1 per 10 <sup>14</sup> bits read	
Annualized Failure Rate (AFR)	0.34%	
Warranty	5 years on distribution units. To determine the warranty for a specific drive, use a web browser to access the following web page: <a href="http://www.seagate.com/support/service/">www.seagate.com/support/service/</a> From this page, click on the "Verify Your Warranty" link. You will be asked to provide the drive serial number, model number (or part number) and country of purchase. The system will display the warranty information for your drive.	
Contact start-stop cycles	50,000 at 25°C, 50% rel. humidity	
Supports Hotplug operation per the Serial ATA Revision 2.5 specification	Yes	

\*One Gbyte equals one billion bytes when referring to hard drive capacity. Accessible capacity may vary depending on operating environment and formatting.

\*\*During periods of drive idle, some offline activity may occur according to the S.M.A.R.T. specification, which may increase acoustic and power to operational levels.

**Table 4: Drive specifications summary for 320 Gbyte models**

Drive specification	ST3320620AS	ST3320820AS
Formatted capacity (512 bytes/sector)*	320 Gbytes	
Guaranteed sectors	625,142,448	
Heads	4	
Discs	2	
Bytes per sector	512	
Default sectors per track	63	
Default read/write heads	16	
Default cylinders	16,383	
Recording density	769 kbits/in avg	
Track density	141 ktracks/in avg	
Areal density	109 Gbits/in <sup>2</sup> avg	
Spindle speed	7,200 RPM	
Internal data transfer rate	1,030 Mbits/sec max	
Sustained data transfer rate OD (read)	72 Mbytes/sec max	
I/O data-transfer rate	300 Mbytes/sec max	
ATA data-transfer modes supported	PIO modes 0–4 Multiword DMA modes 0–2 Ultra DMA modes 0–6	
Cache buffer	16 Mbytes	8 Mbytes
Height (max)	26.1 mm (1.028 inches)	
Width (max)	101.85 mm (4.010 inches)	
Length (max)	146.99 mm (5.787 inches)	
Weight (typical)	635 grams (1.40 lbs)	
Average latency	4.16 msec	
Power-on to ready	15 sec max	
Standby to ready	15 sec max	
Track-to-track seek time	<0.8 msec typical read; <1.0 typical write	
Average seek, read	<8.5 msec typical	
Average seek, write	<10.0 msec typical	
Startup current (typical) 12V (peak)	2.8 amps	
Voltage tolerance (including noise)	5V ± 5% 12V ± 10%	
Ambient temperature	0° to 60°C (operating) –40° to 70°C (nonoperating)	
Temperature gradient	20°C per hour max (operating) 30°C per hour max (nonoperating)	
Relative humidity	5% to 90% (operating) 5% to 95% (nonoperating)	
Relative humidity gradient	30% per hour max	
Wet bulb temperature	37.7°C max (operating) 37.7°C max (nonoperating)	
Altitude, operating	–60.96 m to 3,048 m (–200 ft. to 10,000+ ft.)	
Altitude, nonoperating (below mean sea level, max)	–60.96 m to 12,192 m (–200 ft. to 40,000+ ft.)	
Operational Shock	68 Gs max at 2 msec	
Non-Operational Shock	350 Gs max at 2 msec	



Drive specification	ST3320620AS	ST3320820AS
Vibration, operating	5–22 Hz: 0.25 Gs, Limited displacement 22–350 Hz: 0.50 Gs 350–500 Hz:: 0.25 Gs	
Vibration, nonoperating	5–22 Hz: 0.25 Gs, Limited displacement 22–350 Hz: 5.0 Gs 350–500 Hz:: 1.0 Gs	
Drive acoustics, sound power		
Idle**	2.5 bels (typical) 2.9 bels (max)	
Performance seek	3.0 bels (typical) 3.2 bels (max)	
Nonrecoverable read errors	1 per 10 <sup>14</sup> bits read	
Annualized Failure Rate (AFR)	0.34%	
Warranty	5 years on distribution units. To determine the warranty for a specific drive, use a web browser to access the following web page: <a href="http://www.seagate.com/support/service/">www.seagate.com/support/service/</a> From this page, click on the "Verify Your Warranty" link. You will be asked to provide the drive serial number, model number (or part number) and country of purchase. The system will display the warranty information for your drive.	
Contact start-stop cycles	50,000 at 25°C, 50% rel. humidity	
Supports Hotplug operation per the Serial ATA Revision 2.5 specification	Yes	

\*One Gbyte equals one billion bytes when referring to hard drive capacity. Accessible capacity may vary depending on operating environment and formatting.

\*\*During periods of drive idle, some offline activity may occur according to the S.M.A.R.T. specification, which may increase acoustic and power to operational levels.

**Table 5: Drive specifications summary for 300 Gbyte models**

Drive specification	ST3300620AS	ST3300820AS
Formatted capacity (512 bytes/sector)*	300 Gbytes	
Guaranteed sectors	586,072,368	
Heads	3	
Discs	2	
Bytes per sector	512	
Default sectors per track	63	
Default read/write heads	16	
Default cylinders	16,383	
Recording density	769 kbits/in avg	
Track density	141 ktracks/in avg	
Areal density	109 Gbits/in <sup>2</sup> avg	
Spindle speed	7,200 RPM	
Internal data transfer rate	1,030 Mbits/sec max	
Sustained data transfer rate OD (read)	72 Mbytes/sec max	
I/O data-transfer rate	300 Mbytes/sec max	
ATA data-transfer modes supported	PIO modes 0–4 Multiword DMA modes 0–2 Ultra DMA modes 0–6	
Cache buffer	16 Mbytes	8 Mbytes
Height (max)	26.1 mm (1.028 inches)	
Width (max)	101.85 mm (4.010 inches)	
Length (max)	146.99 mm (5.787 inches)	
Weight (typical)	600 grams (1.32 lb.)	
Average latency	4.16 msec	
Power-on to ready	11 sec max	
Standby to ready	11 sec max	
Track-to-track seek time	<0.8 msec typical read; <1.0 msec typical write	
Average seek, read	<8.5 msec typical	
Average seek, write	<10.0 msec typical	
Startup current (typical) 12V (peak)	2.8 amps	
Voltage tolerance (including noise)	5V ± 5% 12V ± 10%	
Ambient temperature	0° to 60°C (operating) –40° to 70°C (nonoperating)	
Temperature gradient	20°C per hour max (operating) 30°C per hour max (nonoperating)	
Relative humidity	5% to 90% (operating) 5% to 95% (nonoperating)	
Relative humidity gradient	30% per hour max	
Wet bulb temperature	37.7°C max (operating) 37.7°C max (nonoperating)	
Altitude, operating	–60.96 m to 3,048 m (–200 ft. to 10,000+ ft.)	
Altitude, nonoperating (below mean sea level, max)	–60.96 m to 12,192 m (–200 ft. to 40,000+ ft.)	
Operational Shock	68 Gs max at 2 msec	
Non-Operational Shock	350 Gs max at 2 msec	

Drive specification	ST3300620AS	ST3300820AS
Vibration, operating	5–22 Hz: 0.25 Gs, Limited displacement 22–350 Hz: 0.50 Gs 350–500 Hz:: 0.25 Gs	
Vibration, nonoperating	5–22 Hz: 0.25 Gs, Limited displacement 22–350 Hz: 5.0 Gs 350–500 Hz:: 1.0 Gs	
Drive acoustics, sound power		
Idle**	2.5 bels (typical) 2.9 bels (max)	
Performance seek	3.0 bels (typical) 3.2 bels (max)	
Nonrecoverable read errors	1 per 10 <sup>14</sup> bits read	
Annualized Failure Rate (AFR)	0.34%	
Warranty	5 years on distribution units. To determine the warranty for a specific drive, use a web browser to access the following web page: <a href="http://www.seagate.com/support/service/">www.seagate.com/support/service/</a> From this page, click on the “Verify Your Warranty” link. You will be asked to provide the drive serial number, model number (or part number) and country of purchase. The system will display the warranty information for your drive.	
Contact start-stop cycles	50,000 at 25°C, 50% rel. humidity	
Supports Hotplug operation per the Serial ATA Revision 2.5 specification	Yes	

\*One Gbyte equals one billion bytes when referring to hard drive capacity. Accessible capacity may vary depending on operating environment and formatting.

\*\*During periods of drive idle, some offline activity may occur according to the S.M.A.R.T. specification, which may increase acoustic and power to operational levels.

**Table 6: Drive specifications summary for 250 Gbyte models**

Drive specification	ST3250620AS	ST3250820AS	ST3250410AS	ST3250310AS
Formatted capacity (512 bytes/sector)*	250 Gbytes			
Guaranteed sectors	488,397,168			
Heads	3		2	
Discs	2		1	
Bytes per sector	512			
Default sectors per track	63			
Default read/write heads	16			
Default cylinders	16,383			
Recording density	769 kbits/in avg		1,049 kbits/in avg	
Track density	141 ktracks/in avg		155 ktracks/in avg	
Areal density	109 Gbits/in <sup>2</sup> avg		163 Gbits/in <sup>2</sup> avg	
Spindle speed	7,200 RPM			
Internal data transfer rate	1,030 Mbits/sec max		1,212 Mbits/sec max	
Sustained data transfer rate OD (read)	72 Mbytes/sec max		106 Mbytes/sec max	
I/O data-transfer rate	300 Mbytes/sec max			
ATA data-transfer modes supported	PIO modes 0–4 Multiword DMA modes 0–2 Ultra DMA modes 0–6			
Cache buffer	16 Mbytes	8 Mbytes	16 Mbytes	8 Mbytes
Height (max)	26.1 mm (1.028 inches)		19.99 mm (.787 inches)	
Width (max)	101.85 mm (4.010 inches)			
Length (max)	146.99 mm (5.787 inches)			
Weight (typical)	600 grams (1.32 lb.)		380 grams (0.838lb.)	
Average latency	4.16 msec			
Power-on to ready	11 sec max		7.9 sec max	
Standby to ready	11 sec max		7.9 sec max	
Track-to-track seek time	<0.8 msec typical read, <1.0 msec typical write		<0.8 msec typical read, <1.0 msec typical write	
Average seek, read	<8.5 msec typical		<11.0 msec typical	
Average seek, write	<10.0 msec typical		<12.0 msec typical	
Startup current (typical) 12V (peak)	2.8 amps		2.0 amps	
Voltage tolerance (including noise)	5V ± 5% 12V ± 10%			
Ambient temperature	0° to 60°C per hour max (operating) –40° to 70°C per hour max (nonoperating)			
Temperature gradient	20°C (operating) 30°C (nonoperating)			
Relative humidity	5% to 90% (operating) 5% to 95% (nonoperating)			
Relative humidity gradient	30% per hour max			
Wet bulb temperature	37.7°C max (operating) 37.7°C max (nonoperating)			
Altitude, operating	–60.96 m to 3,048 m (–200 ft. to 10,000+ ft.)			
Altitude, nonoperating (below mean sea level, max)	–60.96 m to 12,192 m (–200 ft. to 40,000+ ft.)			
Operational Shock	68 Gs max at 2 msec		63 Gs max at 2 msec	
Non-Operational Shock	350 Gs max at 2 msec			

Drive specification	ST3250620AS	ST3250820AS	ST3250410AS	ST3250310AS
Vibration, operating	5–22 Hz: 0.25 Gs, Limited displacement 22–350 Hz: 0.50 Gs 350–500 Hz:: 0.25 Gs			
Vibration, nonoperating	5–22 Hz: 0.25 Gs, Limited displacement 22–350 Hz: 5.0 Gs 350–500 Hz:: 1.0 Gs			
Drive acoustics, sound power				
Idle**	2.5 bels (typical) 2.9 bels (max)		2.6 bels (typical) 2.7 bels (max)	
Performance seek	3.0 bels (typical) 3.2 bels (max)			
Quiet seek			2.7 bels (typical) 2.8 bels (max)	
Nonrecoverable read errors	1 per 10 <sup>14</sup> bits read			
Annualized Failure Rate (AFR)	0.34%			
Warranty	5 years on distribution units. To determine the warranty for a specific drive, use a web browser to access the following web page: <a href="http://www.seagate.com/support/service/">www.seagate.com/support/service/</a> From this page, click on the “Verify Your Warranty” link. You will be asked to provide the drive serial number, model number (or part number) and country of purchase. The system will display the warranty information for your drive.			
Contact start-stop cycles	50,000 at 25°C, 50% rel. humidity			
Supports Hotplug operation per the Serial ATA Revision 2.5 specification	Yes			

\*One Gbyte equals one billion bytes when referring to hard drive capacity. Accessible capacity may vary depending on operating environment and formatting.

\*\*During periods of drive idle, some offline activity may occur according to the S.M.A.R.T. specification, which may increase acoustic and power to operational levels.

**Table 7: Drive specifications summary for the 200 Gbyte mode**

Drive specification	ST3200820AS
Formatted capacity (512 bytes/sector)*	200 Gbytes
Guaranteed sectors	390,721,968
Heads	3
Discs	2
Bytes per sector	512
Default sectors per track	63
Default read/write heads	16
Default cylinders	16,383
Recording density	769 kbits/in avg
Track density	141 ktracks/in avg
Areal density	109 Gbits/in <sup>2</sup> avg
Spindle speed	7,200 RPM
Internal data transfer rate	1,030 Mbits/sec max
Sustained data transfer rate OD (read)	72 Mbytes/sec max
I/O data-transfer rate	300 Mbytes/sec max
ATA data-transfer modes supported	PIO modes 0–4 Multiword DMA modes 0–2 Ultra DMA modes 0–6
Cache buffer	8 Mbytes
Height (max)	26.1 mm (1.028 inches)
Width (max)	101.85 mm (4.010 inches)
Length (max)	146.99 mm (5.787 inches)
Weight (typical)	600 grams (1.32 lb.)
Average latency	4.16 msec
Power-on to ready	11 sec max
Standby to ready	11 sec max
Track-to-track seek time	<0.8 msec typical read; <1.0 msec typical write
Average seek, read	<8.5 msec typical
Average seek, write	<10.0 msec typical
Startup current (typical) 12V (peak)	2.8 amps
Voltage tolerance (including noise)	5V ± 5% 12V ± 10%
Ambient temperature	0° to 60°C (operating) –40° to 70°C (nonoperating)
Temperature gradient	20°C per hour max (operating) 30°C per hour max (nonoperating)
Relative humidity	5% to 90% (operating) 5% to 95% (nonoperating)
Relative humidity gradient	30% per hour max
Wet bulb temperature	37.7°C max (operating) 37.7°C max (nonoperating)
Altitude, operating	–60.96 m to 3,048 m (–200 ft. to 10,000+ ft.)
Altitude, nonoperating (below mean sea level, max)	–60.96 m to 12,192 m (–200 ft. to 40,000+ ft.)
Operational Shock	68 Gs max at 2 msec
Non-Operational Shock	350 Gs max at 2 msec

Drive specification	ST3200820AS
Vibration, operating	5–22 Hz: 0.25 Gs, Limited displacement 22–350 Hz: 0.5 Gs 350–500 Hz:: 0.25 Gs
Vibration, nonoperating	5–22 Hz: 0.25 Gs, Limited displacement 22–350 Hz: 5.0 Gs 350–500 Hz:: 1.0 Gs
Drive acoustics, sound power	
Idle**	2.5 bels (typical) 2.9 bels (max)
Performance seek	3.0 bels (typical) 3.2 bels (max)
Nonrecoverable read errors	1 per 10 <sup>14</sup> bits read
Annualized Failure Rate (AFR)	0.34%
Warranty	5 years on distribution units. To determine the warranty for a specific drive, use a web browser to access the following web page: <a href="http://www.seagate.com/support/service/">www.seagate.com/support/service/</a> From this page, click on the “Verify Your Warranty” link. You will be asked to provide the drive serial number, model number (or part number) and country of purchase. The system will display the warranty information for your drive.
Contact start-stop cycles	50,000 at 25°C, 50% rel. humidity
Supports Hotplug operation per the Serial ATA Revision 2.5 specification	Yes

\*One Gbyte equals one billion bytes when referring to hard drive capacity. Accessible capacity may vary depending on operating environment and formatting.

\*\*During periods of drive idle, some offline activity may occur according to the S.M.A.R.T. specification, which may increase acoustic and power to operational levels.

**Table 8: Drive specifications summary for the 160 Gbyte models**

Drive specification	ST3160815AS ST3160310AS	ST3160215AS
Formatted capacity (512 bytes/sector)*	160 Gbytes	
Guaranteed sectors	312,581,808	
Heads	2	
Discs	1	
Bytes per sector	512	
Default sectors per track	63	
Default read/write heads	16	
Default cylinders	16,383	
Recording density	732 kbits/in avg	
Track density	137.259 ktracks/in avg	
Areal density	101 Gbits/in <sup>2</sup> avg	
Spindle speed	7,200 RPM	
Internal data transfer rate	930 Mbits/sec max	
Sustained data transfer rate OD (read)	78 Mbytes/sec max **	
I/O data-transfer rate	300 Mbytes/sec max	
ATA data-transfer modes supported	PIO modes 0–4 Multiword DMA modes 0–2 Ultra DMA modes 0–6	
Cache buffer	8 Mbytes	2 Mbytes
Height (max)	19.99 mm (0.787 inches)	
Width (max)	101.6 mm (4.010 inches)	
Length (max)	146.99 mm (5.787 inches)	
Weight (typical)	380 grams (0.838 lb.)	
Average latency	4.16 msec	
Power-on to ready	7.9 sec max	
Standby to ready	7.9 sec max	
Track-to-track seek time	<0.8 msec typical read; <1.0 msec typical write	
Average seek, read	<11 msec typical	
Average seek, write	<12 msec typical	
Startup current (typical) 12V (peak)	<2.0 amps	
Voltage tolerance (including noise)	5V ± 5% 12V ± 10%	
Ambient temperature	0° to 60°C (operating) –40° to 75°C (nonoperating)	
Temperature gradient	20°C per hour max (operating) 30°C per hour max (nonoperating)	
Relative humidity	5% to 90% (operating) 5% to 95% (nonoperating)	
Relative humidity gradient	30% per hour max	
Wet bulb temperature	37.7°C max (operating) 40°C max (nonoperating)	
Altitude, operating	–60.96 m to 3,048 m (–200 ft. to 10,000+ ft.)	
Altitude, nonoperating (below mean sea level, max)	–60.96 m to 12,192 m (–200 ft. to 40,000+ ft.)	
Operational Shock	63 Gs max at 2 msec	
Non-Operational Shock	350 Gs max at 2 msec	



Drive specification	ST3160815AS ST3160310AS	ST3160215AS
Vibration, operating	5–22 Hz: 0.25 Gs, Limited displacement 22–350 Hz: 0.5 Gs 350–500 Hz:: 0.25 Gs	
Vibration, nonoperating	5–22 Hz: 0.25 Gs, Limited displacement 22–350 Hz: 5.0 Gs 350–500 Hz:: 1.0 Gs	
Drive acoustics, sound power		
Idle***	2.8 bels (typical) 3.0 bels (max)	
Quiet seek	3.0 bels (typical) 3.2 bels (max)	
Nonrecoverable read errors	1 per 10 <sup>14</sup> bits read	
Annualized Failure Rate (AFR)	0.34%	
Warranty	5 years on distribution units. To determine the warranty for a specific drive, use a web browser to access the following web page: <a href="http://www.seagate.com/support/service/">www.seagate.com/support/service/</a> From this page, click on the “Verify Your Warranty” link. You will be asked to provide the drive serial number, model number (or part number) and country of purchase. The system will display the warranty information for your drive.	
Contact start-stop cycles	50,000 at 25°C, 50% rel. humidity	
Supports Hotplug operation per the Serial ATA Revision 2.5 specification	Yes	

\*One Gbyte equals one billion bytes when referring to hard drive capacity. Accessible capacity may vary depending on operating environment and formatting.

\*\* 7200.10 family product achieved higher sustained data rate over same 7200.9 family capacity points using identical measurement methodology.

\*\*\* During periods of drive idle, some offline activity may occur according to the S.M.A.R.T. specification, which may increase acoustic and power to operational levels.

**Table 9: Drive specifications summary for the 120 Gbyte models**

Drive specification	ST3120815AS	ST3120215AS
Formatted capacity (512 bytes/sector)*	120 Gbytes	
Guaranteed sectors	234,441,648	
Heads	2	
Discs	1	
Bytes per sector	512	
Default sectors per track	63	
Default read/write heads	16	
Default cylinders	16,383	
Recording density	732 kbits/in avg	
Track density	137.259 ktracks/in avg	
Areal density	101 Gbits/in <sup>2</sup> avg	
Spindle speed	7,200 RPM	
Internal data transfer rate	930 Mbits/sec max	
Sustained data transfer rate OD (read)	78 Mbytes/sec max **	
I/O data-transfer rate	300 Mbytes/sec max	
ATA data-transfer modes supported	PIO modes 0–4 Multiword DMA modes 0–2 Ultra DMA modes 0–6	
Cache buffer	8 Mbytes	2 Mbytes
Height (max)	19.99 mm (0.787 inches)	
Width (max)	101.85 mm (4.010 inches)	
Length (max)	146.99 mm (5.787 inches)	
Weight (typical)	380 grams (0.838 lb.)	
Average latency	4.16 msec	
Power-on to ready	7.9 sec max	
Standby to ready	7.9 sec max	
Track-to-track seek time	<0.8 msec typical read; <1.0 msec typical write	
Average seek, read	<11 msec typical	
Average seek, write	<12 msec typical	
Startup current (typical) 12V (peak)	<2.0 amps	
Voltage tolerance (including noise)	5V ± 5% 12V ± 10%	
Ambient temperature	0° to 60°C (operating) –40° to 75°C (nonoperating)	
Temperature gradient	20°C per hour max (operating) 30°C per hour max (nonoperating)	
Relative humidity	5% to 90% (operating) 5% to 95% (nonoperating)	
Relative humidity gradient	30% per hour max	
Wet bulb temperature	37.7°C max (operating) 40°C max (nonoperating)	
Altitude, operating	–60.96 m to 3,048 m (–200 ft. to 10,000+ ft.)	
Altitude, nonoperating (below mean sea level, max)	–60.96 m to 12,192 m (–200 ft. to 40,000+ ft.)	
Operational Shock	63 Gs max at 2 msec	
Non-Operational Shock	350 Gs max at 2 msec	

Drive specification	ST3120815AS	ST3120215AS
Vibration, operating	5–22 Hz: 0.25 Gs, Limited displacement 22–350 Hz: 0.5 Gs 350–500 Hz:: 0.25 Gs	
Vibration, nonoperating	5–22 Hz: 0.25 Gs, Limited displacement 22–350 Hz: 5.0 Gs 350–500 Hz:: 1.0 Gs	
Drive acoustics, sound power		
Idle***	2.8 bels (typical) 3.0 bels (max)	
Quiet seek	3.0 bels (typical) 3.2 bels (max)	
Nonrecoverable read errors	1 per 10 <sup>14</sup> bits read	
Annualized Failure Rate (AFR)	0.34%	
Warranty	5 years on distribution units. To determine the warranty for a specific drive, use a web browser to access the following web page: <a href="http://www.seagate.com/support/service/">www.seagate.com/support/service/</a> From this page, click on the “Verify Your Warranty” link. You will be asked to provide the drive serial number, model number (or part number) and country of purchase. The system will display the warranty information for your drive.	
Contact start-stop cycles	50,000 at 25°C, 50% rel. humidity	
Supports Hotplug operation per the Serial ATA Revision 2.5 specification	Yes	

\*One Gbyte equals one billion bytes when referring to hard drive capacity. Accessible capacity may vary depending on operating environment and formatting.

\*\* 7200.10 family product achieved higher sustained data rate over same 7200.9 family capacity points using identical measurement methodology.

\*\*\* During periods of drive idle, some offline activity may occur according to the S.M.A.R.T. specification, which may increase acoustic and power to operational levels.

**Table 10: Drive specifications summary for the 80 Gbyte models**

Drive specification	ST380815AS	ST380215AS
Formatted capacity (512 bytes/sector)*	80 Gbytes	
Guaranteed sectors	156,301,488	
Heads	1	
Discs	1	
Bytes per sector	512	
Default sectors per track	63	
Default read/write heads	16	
Default cylinders	16,383	
Recording density	732 kbits/in avg	
Track density	137.259 ktracks/in avg	
Areal density	101 Gbits/in <sup>2</sup> avg	
Spindle speed	7,200 RPM	
Internal data transfer rate	930 Mbits/sec max	
Sustained data transfer rate OD (read)	78 Mbytes/sec max **	
I/O data-transfer rate	300 Mbytes/sec max	
ATA data-transfer modes supported	PIO modes 0–4 Multiword DMA modes 0–2 Ultra DMA modes 0–6	
Cache buffer	8 Mbytes	2 Mbytes
Height (max)	19.99 mm (0.787 inches)	
Width (max)	101.85 mm (4.010 inches)	
Length (max)	146.99 mm (5.787 inches)	
Weight (typical)	365 grams (0.805 lb.)	
Average latency	4.16 msec	
Power-on to read	7.9 sec max	
Standby to ready	7.9 sec max	
Track-to-track seek time	<0.8 msec typical read); <1.0 msec typical write	
Average seek, read	<11 msec typical	
Average seek, write	<12 msec typical	
Startup current (typical) 12V (peak)	<2.0 amps	
Voltage tolerance (including noise)	5V ± 5% 12V ± 10%	
Ambient temperature	0° to 60°C (operating) –40° to 75°C (nonoperating)	
Temperature gradient	20°C per hour max (operating) 30°C per hour max (nonoperating)	
Relative humidity	5% to 90% (operating) 5% to 95% (nonoperating)	
Relative humidity gradient	30% per hour max	
Wet bulb temperature	37.7°C max (operating) 40°C max (nonoperating)	
Altitude, operating	–60.96 m to 3,048 m (–200 ft. to 10,000+ ft.)	
Altitude, nonoperating (below mean sea level, max)	–60.96 m to 12,192 m (–200 ft. to 40,000+ ft.)	
Operational Shock	63 Gs max at 2 msec	
Non-Operational Shock	350 Gs max at 2 msec	

Drive specification	ST380815AS	ST380215AS
Vibration, operating	5–22 Hz: 0.25 Gs, Limited displacement 22–350 Hz: 0.5 Gs 350–500 Hz:: 0.25 Gs	
Vibration, nonoperating	5–22 Hz: 0.25 Gs, Limited displacement 22–350 Hz: 5.0 Gs 350–500 Hz:: 1.0 Gs	
Drive acoustics, sound power		
Idle***	2.8 bels (typical) 3.0 bels (max)	
Quiet seek	3.0 bels (typical) 3.2 bels (max)	
Nonrecoverable read errors	1 per 10 <sup>14</sup> bits read	
Annualized Failure Rate (AFR)	0.34%	
Warranty	5 years on distribution units. To determine the warranty for a specific drive, use a web browser to access the following web page: <a href="http://www.seagate.com/support/service/">www.seagate.com/support/service/</a> From this page, click on the “Verify Your Warranty” link. You will be asked to provide the drive serial number, model number (or part number) and country of purchase. The system will display the warranty information for your drive.	
Contact start-stop cycles	50,000 at 25°C, 50% rel. humidity	
Supports Hotplug operation per the Serial ATA Revision 2.5 specification	Yes	

\*One Gbyte equals one billion bytes when referring to hard drive capacity. Accessible capacity may vary depending on operating environment and formatting.

\*\* 7200.10 family product achieved higher sustained data rate over same 7200.9 family capacity points using identical measurement methodology.

\*\*\* During periods of drive idle, some offline activity may occur according to the S.M.A.R.T. specification, which may increase acoustic and power to operational levels.

**Table 11: Drive specifications summary for the 40 Gbyte models**

Drive specification	ST340815AS	ST340215AS
Formatted capacity (512 bytes/sector)*	40 Gbytes	
Guaranteed sectors	78,165,360	
Heads	1	
Discs	1	
Bytes per sector	512	
Default sectors per track	63	
Default read/write heads	16	
Default cylinders	16,383	
Recording density	732 kbits/in avg	
Track density	137.259 ktracks/in avg	
Areal density	101 Gbits/in <sup>2</sup> avg	
Spindle speed	7,200 RPM	
Internal data transfer rate	930 Mbits/sec max	
Sustained data transfer rate OD (read)	78 Mbytes/sec max **	
I/O data-transfer rate	300 Mbytes/sec max	
ATA data-transfer modes supported	PIO modes 0–4 Multiword DMA modes 0–2 Ultra DMA modes 0–6	
Cache buffer	8 Mbytes	2 Mbytes
Height (max)	19.99 mm (0.787 inches)	
Width (max)	101.85 mm (4.010 inches)	
Length (max)	146.99 mm (5.787 inches)	
Weight (typical)	365 grams (0.805 lb.)	
Average latency	4.16 msec	
Power-on to ready	7.9 sec max	
Standby to ready	7.9 sec max	
Track-to-track seek time	<0.8 msec typical read; <1.0 msec typical write	
Average seek, read	<11 msec typical	
Average seek, write	<12 msec typical	
Startup current (typical) 12V (peak)	<2.0 amps	
Voltage tolerance (including noise)	5V ± 5% 12V ± 10%	
Ambient temperature	0° to 60°C (operating) –40° to 75°C (nonoperating)	
Temperature gradient	20°C per hour max (operating) 30°C per hour max (nonoperating)	
Relative humidity	5% to 90% (operating) 5% to 95% (nonoperating)	
Relative humidity gradient	30% per hour max	
Wet bulb temperature	37.7°C max (operating) 40°C max (nonoperating)	
Altitude, operating	–60.96 m to 3,048 m (–200 ft. to 10,000+ ft.)	
Altitude, nonoperating (below mean sea level, max)	–60.96 m to 12,192 m (–200 ft. to 40,000+ ft.)	
Operational Shock	63 Gs max at 2 msec	
Non-Operational Shock	350 Gs max at 2 msec	

Drive specification	ST340815AS	ST340215AS
Vibration, operating	5–22 Hz: 0.25 Gs, Limited displacement 22–350 Hz: 0.5 Gs 350–500 Hz:: 0.25 Gs	
Vibration, nonoperating	5–22 Hz: 0.25 Gs, Limited displacement 22–350 Hz: 5.0 Gs 350–500 Hz:: 1.0 Gs	
Drive acoustics, sound power		
Idle***	2.8 bels (typical) 3.0 bels (max)	
Quiet seek	3.0 bels (typical) 3.2 bels (max)	
Nonrecoverable read errors	1 per 10 <sup>14</sup> bits read	
Annualized Failure Rate (AFR)	0.34%	
Warranty	5 years on distribution units. To determine the warranty for a specific drive, use a web browser to access the following web page: <a href="http://www.seagate.com/support/service/">www.seagate.com/support/service/</a> From this page, click on the “Verify Your Warranty” link. You will be asked to provide the drive serial number, model number (or part number) and country of purchase. The system will display the warranty information for your drive.	
Contact start-stop cycles	50,000 at 25°C, 50% rel. humidity	
Supports Hotplug operation per the Serial ATA Revision 2.5 specification	Yes	

\*One Gbyte equals one billion bytes when referring to hard drive capacity. Accessible capacity may vary depending on operating environment and formatting.

\*\* 7200.10 family product achieved higher sustained data rate over same 7200.9 family capacity points using identical measurement methodology.

\*\*\* During periods of drive idle, some offline activity may occur according to the S.M.A.R.T. specification, which may increase acoustic and power to operational levels.

## 2.2 Formatted capacity

Model	Formatted capacity*	Guaranteed sectors	Bytes per sector
ST3750640AS ST3750840AS	750 Gbytes	1,465,149,168	512
ST3500630AS ST3500830AS	500 Gbytes	976,773,168	512
ST3400620AS ST3400820AS	400 Gbytes	781,422,768	512
ST3320620AS ST3320820AS	320 Gbytes	625,142,448	512
ST3300620AS ST3300820AS	300 Gbytes	586,072,368	512
ST3250620AS ST3250820AS ST3250410AS ST3250310AS	250 Gbytes	488,397,168	512
ST3200820AS	200 Gbytes	390,721,968	512
ST3160815AS ST3160310AS ST3160215AS	160 Gbytes	312,581,808	512
ST3120815AS ST3120215AS	120 Gbytes	234,441,648	512
ST380815AS ST380215AS	80 Gbytes	156,301,488	512
ST340815AS ST340215AS	40 Gbytes	78,165,360	512

\*One Gbyte equals one billion bytes when referring to hard drive capacity. Accessible capacity may vary depending on operating environment and formatting.

### 2.2.1 LBA mode

When addressing these drives in LBA mode, all blocks (sectors) are consecutively numbered from 0 to  $n-1$ , where  $n$  is the number of guaranteed sectors as defined above.

See Section 4.3.1, "Identify Device command" (words 60-61 and 100-103) for additional information about 48-bit addressing support of drives with capacities over 137 Gbytes.

## 2.3 Default logical geometry

Cylinders	Read/write heads	Sectors per track
16,383	16	63

### LBA mode

When addressing these drives in LBA mode, all blocks (sectors) are consecutively numbered from 0 to  $n-1$ , where  $n$  is the number of guaranteed sectors as defined above.



## 2.4 Recording and interface technology

	Model capacity				
	750	500	400	320	300
Interface	Serial ATA (SATA)				
Recording method	Perpendicular				
Recording density (kbits/inch avg)	769				
Track density (ktracks/inch avg)	141				
Areal density (Gbits/inch <sup>2</sup> avg)	109				
Spindle speed (RPM)	7,200 ± 0.2%				
Internal data transfer rate (Mbits/sec max)	1,030				
Sustained data transfer rate (read) (Mbytes/sec max)	78	72			
I/O data-transfer rate (Mbytes/sec max)	300				

	Model capacity			
	160	120	80	40
Interface	Serial ATA (SATA)			
Recording method	Perpendicular			
Recording density (kbits/inch avg)	732			
Track density (ktracks/inch avg)	137.259			
Areal density (Gbits/inch <sup>2</sup> avg)	101			
Spindle speed (RPM)	7,200 ± 0.2%			
Internal data transfer rate (Mbits/sec max)	930			
Sustained data transfer rate (read) (Mbytes/sec max)	78 *			
I/O data-transfer rate (Mbytes/sec max)	300			

\* 7200.10 family product achieved higher sustained data rate over same 7200.9 family capacity points using identical measurement methodology.

	Model capacity	
	ST3250620AS, ST3250820AS and ST3200820AS	ST3250410AS and ST3250310AS
Interface	Serial ATA (SATA)	
Recording method	Perpendicular	
Recording density (kbits/inch avg)	769	1,049
Track density (ktracks/inch avg)	141	155
Areal density (Gbits/inch <sup>2</sup> avg)	109	163
Spindle speed (RPM)	7,200 ± 0.2%	
Internal data transfer rate (Mbits/sec max)	1,030	1,212
Sustained data transfer rate (read) (Mbytes/sec max)	72	106
I/O data-transfer rate (Mbytes/sec max)	300	

## 2.5 Physical characteristics

<b>Maximum height (4, 3 and 2 disc models)</b>	26.1 mm (1.028 inches)
<b>Maximum height (1 disc models)</b>	19.99 mm (0.787 inches)
<b>Maximum width</b>	101.85 mm (4.010 inches)
<b>Maximum length</b>	146.99 mm (5.787 inches)
<b>Typical weight</b>	
ST3750640AS and ST3750840AS	720 grams (1.59 lbs)
ST3500630AS, ST3500830AS, ST3400620AS, ST3400820AS, ST3320620AS and ST3320820AS	635 grams (1.40 lbs)
ST3300620AS, ST3300820AS, ST3250620AS, ST3250820AS and ST3250410AS	600 grams (1.32 lbs)
ST3250310AS, ST3200820AS, ST3160815AS, ST3160310AS, ST3160215AS, ST3120815AS and ST3120215AS,	380 grams (0.838 lbs.)
ST380815AS, ST380215AS, ST340815AS and ST340215AS	365 grams (0.805 lbs)
<b>Cache buffer</b>	
ST3750640AS, ST3500630AS, ST3400620AS, ST3320620AS, ST3300620AS, ST3250620AS and ST3250410AS	16 Mbytes (16,384 kbytes)
ST3750840AS, ST3500830AS, ST3400820AS, ST3320820AS, ST3300820AS, ST3250820AS, ST3250310AS, ST3200820AS, ST3160815AS, ST3160310AS, ST3120815AS, ST380815AS and ST340815AS	8 Mbytes (8,192 kbytes)
ST3160215AS, ST3120215AS, ST380215AS and ST340215AS	2 Mbytes (2,048 kbytes)

## 2.6 Seek time

Seek measurements are taken with nominal power at 25°C ambient temperature. All times are measured using drive diagnostics. The specifications in the table below are defined as follows:

- Track-to-track seek time is an average of all possible single-track seeks in both directions.
- Average seek time is a true statistical random average of at least 5,000 measurements of seeks between random tracks, less overhead.

	750 - 300 GB models*, ST3250620AS, ST3250820AS and 200 GB model		ST3250410AS and ST3250310AS* and 160 - 40 GB models**	
Typical seek times (msec)	Read	Write	Read	Write
Track-to-track	<0.8	<1.0	<0.8	<1.0
Average	<8.5	<10.0	<11.0	<12.0
Average latency:	4.16			

\*Measured in performance mode.

\*\*Measured in quiet mode.

**Note.** These drives are designed to consistently meet the seek times represented in this manual. Physical seeks, regardless of mode (such as track-to-track and average), are expected to meet the noted values. However, due to the manner in which these drives are formatted, benchmark tests that include command overhead or measure logical seeks may produce results that vary from these specifications.

## 2.7 Start/stop times

	750 - 320 GB models	300 GB model ST3250620AS, ST3250820AS and 200 GB model	ST3250410AS, ST3250310AS and 160 - 40 GB models
Power-on to Ready (sec)	15 (max)	11 (max)	7.9 (max)
Standby to Ready (sec)	15 (max)	11 (max)	7.9 (max)
Ready to spindle stop (sec)	10 (max)		

## 2.8 Power specifications

The drive receives DC power (+5V or +12V) through a native SATA power connector. See Figure 4 on page 42.

### 2.8.1 Power consumption

Power requirements for the drives are listed in the table on page 9. Typical power measurements are based on an average of drives tested, under nominal conditions, using 5.0V and 12.0V input voltage at 25°C ambient temperature.

- **Spinup power**

Spinup power is measured from the time of power-on to the time that the drive spindle reaches operating speed.

- **Seek mode**

During seek mode, the read/write actuator arm moves toward a specific position on the disc surface and does not execute a read or write operation. Servo electronics are active. Seek mode power represents the worst-case power consumption, using only random seeks with read or write latency time. This mode is not typical and is provided for worst-case information.

- **Read/write power and current**

Read/write power is measured with the heads on track, based on a 16-sector write followed by a 32-msec delay, then a 16-sector read followed by a 32-msec delay.

- **Operating power and current**

Operating power is measured using 40 percent random seeks, 40 percent read/write mode (1 write for each 10 reads) and 20 percent drive idle mode.

- **Idle mode power**

Idle mode power is measured with the drive up to speed, with servo electronics active and with the heads in a random track location.

- **Standby mode**

During Standby mode, the drive accepts commands, but the drive is not spinning, and the servo and read/write electronics are in power-down mode.

**Table 12: DC power requirements**

Power dissipation (4-disc values shown)	Avg (watts 25° C)	Avg 5V typ amps	Avg 12V typ amps
Spinup	—	—	2.8 (peak)
Idle*	9.30	0.611	0.520
Idle* (with offline activity)	10.40	0.719	0.567
Operating (40% r/w, 40% seek, 20% inop.)	13.00	0.772	0.762
Seeking (random, 20% idle)	12.60	0.613	0.795
Standby	0.80	0.106	0.023
Sleep	0.80	0.106	0.023

\*During periods of drive idle, some offline activity may occur according to the S.M.A.R.T. specification, which may increase acoustic and power to operational levels.

### 2.8.1.1 Typical current profiles

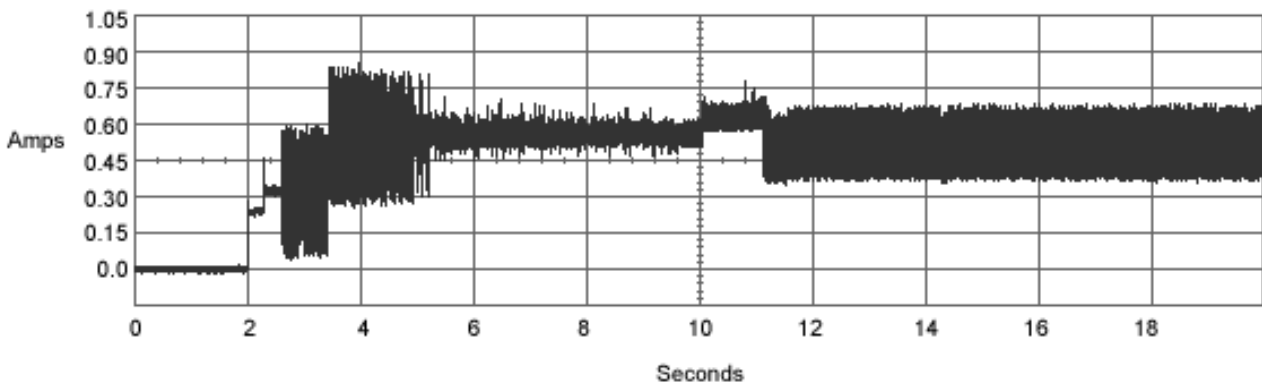


Figure 1. Typical 5V startup and operation current profile

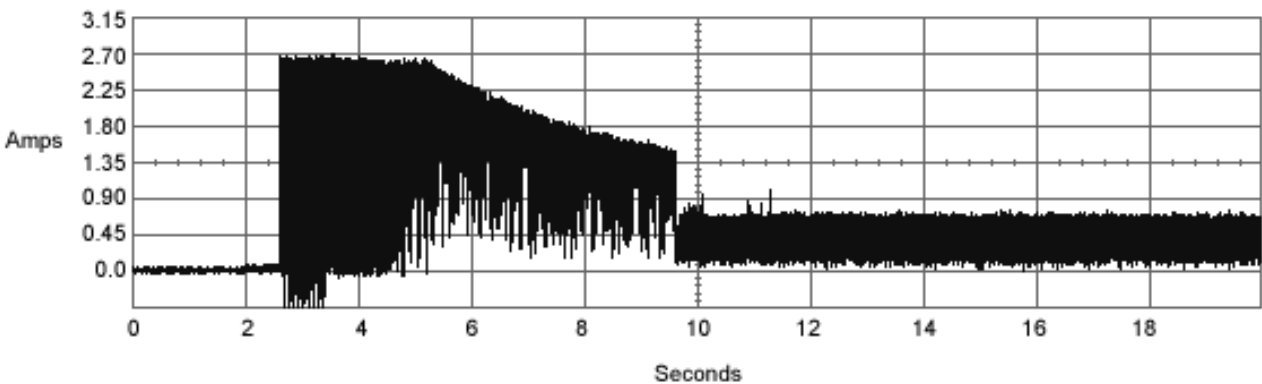


Figure 2. Typical 12V startup and operation current profile

### 2.8.2 Conducted noise

Input noise ripple is measured at the host system power supply across an equivalent 80-ohm resistive load on the +12 volt line or an equivalent 15-ohm resistive load on the +5 volt line.

- Using 12-volt power, the drive is expected to operate with a maximum of 120 mV peak-to-peak square-wave injected noise at up to 10 MHz.
- Using 5-volt power, the drive is expected to operate with a maximum of 100 mV peak-to-peak square-wave injected noise at up to 10 MHz.

**Note.** Equivalent resistance is calculated by dividing the nominal voltage by the typical RMS read/write current.

### 2.8.3 Voltage tolerance

Voltage tolerance (including noise):

5V  $\pm$  5%

12V  $\pm$  10%

## 2.8.4 Power-management modes

The drive provides programmable power management to provide greater energy efficiency. In most systems, you can control power management through the system setup program. The drive features the following power-management modes:

Power modes	Heads	Spindle	Buffer
Active	Tracking	Rotating	Enabled
Idle	Tracking	Rotating	Enabled
Standby	Parked	Stopped	Enabled
Sleep	Parked	Stopped	Disabled

- **Active mode**

The drive is in Active mode during the read/write and seek operations.

- **Idle mode**

The buffer remains enabled, and the drive accepts all commands and returns to Active mode any time disc access is necessary.

- **Standby mode**

The drive enters Standby mode when the host sends a Standby Immediate command. If the host has set the standby timer, the drive can also enter Standby mode automatically after the drive has been inactive for a specifiable length of time. The standby timer delay is established using a Standby or Idle command. In Standby mode, the drive buffer is enabled, the heads are parked and the spindle is at rest. The drive accepts all commands and returns to Active mode any time disc access is necessary.

- **Sleep mode**

The drive enters Sleep mode after receiving a Sleep command from the host. In Sleep mode, the drive buffer is disabled, the heads are parked and the spindle is at rest. The drive leaves Sleep mode after it receives a Hard Reset or Soft Reset from the host. After receiving a reset, the drive exits Sleep mode and enters Standby mode with all current translation parameters intact.

- **Idle and Standby timers**

Each time the drive performs an Active function (read, write or seek), the standby timer is reinitialized and begins counting down from its specified delay times to zero. If the standby timer reaches zero before any drive activity is required, the drive makes a transition to Standby mode. In both Idle and Standby mode, the drive accepts all commands and returns to Active mode when disc access is necessary.

## 2.9 Environmental specifications

### 2.9.1 Ambient temperature

Ambient temperature is defined as the temperature of the environment immediately surrounding the drive. Actual drive case temperature should not exceed 69°C (156°F) within the operating ambient conditions.

Above 1,000 feet (305 meters), the maximum temperature is derated linearly to 112°F (44°C) at 10,000 feet (3,048 meters).

Operating:	0° to 60°C (32° to 140°F)
Nonoperating:	–40° to 70°C (–40° to 158°F)

### 2.9.2 Temperature gradient

Operating:	20°C per hour (68°F per hour max), without condensation
Nonoperating:	30°C per hour (86°F per hour max)

### 2.9.3 Humidity

#### 2.9.3.1 Relative humidity

Operating:	5% to 90% noncondensing (30% per hour max)
Nonoperating:	5% to 95% noncondensing (30% per hour max)

#### 2.9.3.2 Wet bulb temperature

Operating:	37.7°C (99.9°F max)
Nonoperating:	200 - 750 GB models: 37.7°C (99.9°F max) 40 - 160 GB models: 40°C (104°F max)

### 2.9.4 Altitude

Operating:	–60.96 m to 3,048 m (–200 ft. to 10,000+ ft.)
Nonoperating:	–60.96 m to 12,192 m (–200 ft. to 40,000+ ft.)

### 2.9.5 Shock

All shock specifications assume that the drive is mounted securely with the input shock applied at the drive mounting screws. Shock may be applied in the X, Y or Z axis.

#### 2.9.5.1 Operating shock

These models (750GB, 500GB, 400GB, 320GB, 200GB, ST3250620AS and ST3250820AS) comply with the performance levels specified in this document when subjected to a maximum operating shock of 68 Gs based on half-sine shock pulses of 2 msec. Shocks should not be repeated more than two times per second.

These models (ST3250410AS, ST3250310AS, 160GB, 120GB, 80GB and 40GB) comply with the performance levels specified in this document when subjected to a maximum operating shock of 63 Gs based on half-sine shock pulses of 2 msec. Shocks should not be repeated more than two times per second.

## **2.9.5.2 Nonoperating shock**

### **1 and 2 Disc models**

The nonoperating shock level that the drive can experience without incurring physical damage or degradation in performance when subsequently put into operation is 350 Gs based on a nonrepetitive half-sine shock pulse of 2 msec duration.

### **3 and 4 Disc models**

The nonoperating shock level that the drive can experience without incurring physical damage or degradation in performance when subsequently put into operation is 300 Gs based on a nonrepetitive half-sine shock pulse of 2 msec duration.

## **2.9.6 Vibration**

All vibration specifications assume that the drive is mounted securely with the input vibration applied at the drive mounting screws. Vibration may be applied in the X, Y or Z axis.

### **2.9.6.1 Operating vibration**

The maximum vibration levels that the drive may experience while meeting the performance standards specified in this document are specified below.

5–22 Hz	0.25 Gs (Limited displacement)
22–350 Hz	0.50 Gs
350–500 Hz	0.25 Gs

### **2.9.6.2 Nonoperating vibration**

The maximum nonoperating vibration levels that the drive may experience without incurring physical damage or degradation in performance when subsequently put into operation are specified below.

5–22 Hz	0.25 Gs (limited displacement)
22–350 Hz	5.0 Gs
350–500 Hz	1.0 Gs



## 2.10 Acoustics

Drive acoustics are measured as overall A-weighted acoustic sound power levels (no pure tones). All measurements are consistent with ISO document 7779. Sound power measurements are taken under essentially free-field conditions over a reflecting plane. For all tests, the drive is oriented with the cover facing upward.

**Note.** For seek mode tests, the drive is placed in seek mode only. The number of seeks per second is defined by the following equation:

$$(\text{Number of seeks per second} = 0.4 / (\text{average latency} + \text{average access time}))$$

**Table 13: Fluid Dynamic Bearing (FDB) motor acoustics**

	Idle*	Seek
ST3750640AS, ST3750840AS, ST3500630AS, ST3500830AS	2.8 bels (typ) 3.0 bels (max)	3.7 bels (typ)** 3.9 bels (max)**
ST3400620AS, ST3400820AS	2.7 bels (typ) 2.9 bels (max)	3.4 bels (typ)** 3.6 bels (max)**
ST3320620AS, ST3320820AS, ST3300620AS, ST3300820AS, ST3250620AS, ST3250820AS, ST3200820AS	2.5 bels (typ) 2.9 bels (max)	3.0 bels (typ)** 3.2 bels (max)**
ST3250410AS, ST3250310AS	2.6 bels (typ) 2.7 bels (max)	2.7 bels (typ)*** 2.8 bels (max)***
ST3160815AS, ST3160310AS, ST3160215AS, ST3120815AS, ST3120215AS, ST380815AS, ST380215AS, ST340815AS, ST340215AS	2.8 bels (typ) 3.0 bels (max)	3.0 bels (typ)*** 3.2 bels (max)***

\*During periods of drive idle, some offline activity may occur according to the S.M.A.R.T. specification, which may increase acoustic and power to operational levels.

\*\*Measured in performance mode.

\*\*\*Measured in quiet mode.

### 2.10.1 Test for Prominent Discrete Tones (PDTs)

Seagate follows the ECMA-74 standards for measurement and identification of PDTs. An exception to this process is the use of the absolute threshold of hearing. Seagate uses the lower limit for the threshold curve\* to discern tone audibility and to compensate for the inaudible components of sound prior to computation of tone ratios according to Annex D of the ECMA-74 standards.

\* Defined as the median curve given by ISO 389-7 (Tf curve) minus 10dB at all frequencies.

## 2.11 Electromagnetic immunity

When properly installed in a representative host system, the drive operates without errors or degradation in performance when subjected to the radio frequency (RF) environments defined in the following table:

**Table 14: Radio frequency environments**

Test	Description	Performance level	Reference standard
Electrostatic discharge	Contact, HCP, VCP: $\pm 4$ kV; Air: $\pm 8$ kV	B	EN 61000-4-2: 95
Radiated RF immunity	80 to 1,000 MHz, 3 V/m, 80% AM with 1 kHz sine 900 MHz, 3 V/m, 50% pulse modulation @ 200 Hz	A	EN 61000-4-3: 96 ENV 50204: 95
Electrical fast transient	$\pm 1$ kV on AC mains, $\pm 0.5$ kV on external I/O	B	EN 61000-4-4: 95
Surge immunity	$\pm 1$ kV differential, $\pm 2$ kV common, AC mains	B	EN 61000-4-5: 95
Conducted RF immunity	150 kHz to 80 MHz, 3 Vrms, 80% AM with 1 kHz sine	A	EN 61000-4-6: 97
Voltage dips, interrupts	0% open, 5 seconds 0% short, 5 seconds 40%, 0.10 seconds 70%, 0.01 seconds	C C C B	EN 61000-4-11: 94

## 2.12 Reliability

### 2.12.1 Annualized Failure Rate (AFR) and Mean Time Between Failures (MTBF)

The product shall achieve an Annualized Failure Rate (AFR) of 0.34% (MTBF of 0.7 million hours) when operated in an environment of ambient air temperatures of 25°C. Operation at temperatures outside the specifications in Section 2.9 may increase the product AFR (decrease MTBF). AFR and MTBF are population statistics that are not relevant to individual units.

AFR and MTBF specifications are based on the following assumptions for desktop personal computer environments:

- 2400 power-on-hours per year.
- 10,000 average motor start/stop cycles per year.
- Operations at nominal voltages.
- Temperatures outside the specifications in Section 2.9 may reduce the product reliability.
- Normal I/O duty cycle for desktop personal computers. Operation at excessive I/O duty cycle may degrade product reliability.

The desktop personal computer environment of power-on-hours, temperature, and I/O duty cycle affect the product AFR and MTBF. The AFR and MTBF will be degraded if used in a enterprise application.

Nonrecoverable read errors	1 per 10 <sup>14</sup> bits read, max
Annualized Failure Rate (AFR)	0.34% (nominal power, 25°C ambient temperature)
Contact start-stop cycles	50,000 cycles (at nominal voltage and temperature, with 60 cycles per hour and a 50% duty cycle)
Warranty	5 years on distribution units. To determine the warranty for a specific drive, use a web browser to access the following web page: <a href="http://www.seagate.com/support/service/">www.seagate.com/support/service/</a> From this page, click on the "Verify Your Warranty" link. You will be asked to provide the drive serial number, model number (or part number) and country of purchase. The system will display the warranty information for your drive.
Preventive maintenance	None required.

## 2.13 Agency certification

### 2.13.1 Safety certification

The drives are recognized in accordance with UL 1950 and CSA C22.2 (950) and meet all applicable sections of IEC950 and EN 60950.

### 2.13.2 Electromagnetic compatibility

Hard drives that display the CE mark comply with the European Union (EU) requirements specified in the Electromagnetic Compatibility Directive (89/336/EEC). Testing is performed to the levels specified by the product standards for Information Technology Equipment (ITE). Emission levels are defined by EN 55022, Class B and the immunity levels are defined by EN 55024.

Drives are tested in representative end-user systems. Although CE-marked Seagate drives comply with the directives when used in the test systems, we cannot guarantee that all systems will comply with the directives. The drive is designed for operation inside a properly designed enclosure, with properly shielded I/O cable (if necessary) and terminators on all unused I/O ports. Computer manufacturers and system integrators should confirm EMC compliance and provide CE marking for their products.

## Korean RRL

If these drives have the Korea Ministry of Information and Communication (MIC) logo, they comply with paragraph 1 of Article 11 of the Electromagnetic Compatibility control Regulation and meet the Electromagnetic Compatibility (EMC) Framework requirements of the Radio Research Laboratory (RRL) Ministry of Information and Communication Republic of Korea.

These drives have been tested and comply with the Electromagnetic Interference/Electromagnetic Susceptibility (EMI/EMS) for Class B products. Drives are tested in a representative, end-user system by a Korean-recognized lab.

- Family name: Barracuda 7200.10
- Certificate number: STX-L3510 (B)

## Australian C-Tick (N176)

If these models have the C-Tick marking, they comply with the Australia/New Zealand Standard AS/NZS3548 1995 and meet the Electromagnetic Compatibility (EMC) Framework requirements of the Australian Communication Authority (ACA).

### 2.13.3 FCC verification

These drives are intended to be contained solely within a personal computer or similar enclosure (not attached as an external device). As such, each drive is considered to be a subassembly even when it is individually marketed to the customer. As a subassembly, no Federal Communications Commission verification or certification of the device is required.

Seagate has tested this device in enclosures as described above to ensure that the total assembly (enclosure, disc drive, motherboard, power supply, etc.) does comply with the limits for a Class B computing device, pursuant to Subpart J, Part 15 of the FCC rules. Operation with noncertified assemblies is likely to result in interference to radio and television reception.

**Radio and television interference.** This equipment generates and uses radio frequency energy and if not installed and used in strict accordance with the manufacturer's instructions, may cause interference to radio and television reception.

This equipment is designed to provide reasonable protection against such interference in a residential installation. However, there is no guarantee that interference will not occur in a particular installation. If this equipment does cause interference to radio or television, which can be determined by turning the equipment on and off, you are encouraged to try one or more of the following corrective measures:

- Reorient the receiving antenna.
- Move the device to one side or the other of the radio or TV.
- Move the device farther away from the radio or TV.
- Plug the computer into a different outlet so that the receiver and computer are on different branch outlets.

If necessary, you should consult your dealer or an experienced radio/television technician for additional suggestions. You may find helpful the following booklet prepared by the Federal Communications Commission: *How to Identify and Resolve Radio-Television Interference Problems*. This booklet is available from the Superintendent of Documents, U.S. Government Printing Office, Washington, DC 20402. Refer to publication number 004-000-00345-4.

## 2.14 Environmental protection

Seagate designs its products to meet environmental protection requirements worldwide, including regulations restricting certain chemical substances.

### 2.14.1 European Union Restriction of Hazardous Substances (RoHS) Directive

Seagate designs its products to meet environmental protection requirements worldwide, including regulations restricting certain chemical substances. A new law, the European Union Restriction of Hazardous Substances (RoHS) Directive, restricts the presence of chemical substances, including Lead, Cadmium, Mercury, Hexavalent Chromium, PBB and PBDE, in electronic products, effective July 2006. This drive is manufactured with components and materials that comply with the RoHS Directive.

### 2.14.2 China Restriction of Hazardous Substances (RoHS) Directive

#### 2.14.2 中国限制危险物品的指令

This product has an Environmental Protection Use Period (EPUP) of 20 years. The following table contains information mandated by China's "Marking Requirements for Control of Pollution Caused by Electronic Information Products" Standard.



该产品具有20年的环境保护使用周期（EPUP）。下表包含了中国“电子产品所导致的污染的控制的记号要求”所指定的信息。

Name of Parts 部件名称	Toxic or Hazardous Substances or Elements有毒有害物质或元素					
	Lead 铅 (Pb)	Mercury 汞 (Hg)	Cadmium 镉 (Cd)	Hexavalent Chromium 六价铬 (Cr6+)	Polybrominated Biphenyl 多溴联苯 (PBB)	Polybrominated Diphenyl Ether 多溴二苯醚 (PBDE)
PCBA	X	O	O	O	O	O
HDA	X	O	O	O	O	O

"O" indicates the hazardous and toxic substance content of the part (at the homogenous material level) is lower than the threshold defined by the China RoHS MCV Standard.

“O”表示该部件（于同类物品程度上）所含的危险和有毒物质低于中国RoHS MCV标准所定义的门槛值。

"X" indicates the hazardous and toxic substance content of the part (at the homogenous material level) is over the threshold defined by the China RoHS MCV Standard.

“X”表示该部件（于同类物品程度上）所含的危险和有毒物质超出中国RoHS MCV标准所定义的门槛值。

## 2.15 Corrosive environment

Seagate electronic drive components pass accelerated corrosion testing equivalent to 10 years exposure to light industrial environments containing sulfurous gases, chlorine and nitric oxide, classes G and H per ASTM B845. However, this accelerated testing cannot duplicate every potential application environment. Users should use caution exposing any electronic components to uncontrolled chemical pollutants and corrosive chemicals as electronic drive component reliability can be affected by the installation environment. The silver, copper, nickel and gold films used in Seagate products are especially sensitive to the presence of sulfide, chloride, and nitrate contaminants. Sulfur is found to be the most damaging. In addition, electronic components should never be exposed to condensing water on the surface of the printed circuit board assembly (PCBA) or exposed to an ambient relative humidity greater than 95%. Materials used in cabinet fabrication, such as vulcanized rubber, that can outgas corrosive compounds should be minimized or eliminated. The useful life of any electronic equipment may be extended by replacing materials near circuitry with sulfide-free alternatives.



## 3.0 Configuring and mounting the drive

---

This section contains the specifications and instructions for configuring and mounting the drive.

### 3.1 Handling and static-discharge precautions

After unpacking, and before installation, the drive may be exposed to potential handling and electrostatic discharge (ESD) hazards. Observe the following standard handling and static-discharge precautions:

**Caution:**

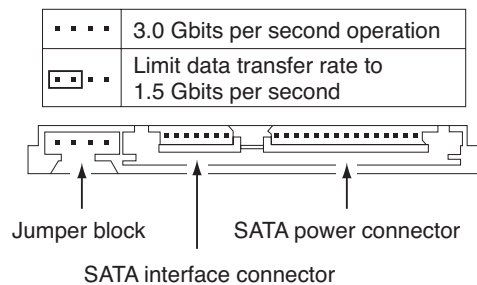
- Before handling the drive, put on a grounded wrist strap, or ground yourself frequently by touching the metal chassis of a computer that is plugged into a grounded outlet. Wear a grounded wrist strap throughout the entire installation procedure.
- Handle the drive by its edges or frame *only*.
- The drive is extremely fragile—handle it with care. Do not press down on the drive top cover.
- Always rest the drive on a padded, antistatic surface until you mount it in the computer.
- Do not touch the connector pins or the printed circuit board.
- Do not remove the factory-installed labels from the drive or cover them with additional labels. Removal voids the warranty. Some factory-installed labels contain information needed to service the drive. Other labels are used to seal out dirt and contamination.

### 3.2 Configuring the drive

Each drive on the Serial ATA interface connects point-to-point with the Serial ATA host adapter. There is no master/slave relationship because each drive is considered a master in a point-to-point relationship. If two drives are attached on one Serial ATA host adapter, the host operating system views the two devices as if they were both “masters” on two separate ports. Both drives behave as if they are Device 0 (master) devices.

Serial ATA drives are designed for easy installation. It is usually not necessary to set any jumpers on the drive for proper operation; however, if you connect the drive and receive a “drive not detected” error, your SATA-equipped motherboard or host adapter may use a chipset that does not support SATA speed autonegotiation. If you have a motherboard or host adapter that does not support autonegotiation:

- Install a jumper as shown in Figure 3 below to limit the data transfer rate to 1.5 Gbits per second (and leave the drive connected to the SATA-equipped motherboard or host adapter that doesn’t support autonegotiation) or
- Install a SATA host adapter that supports autonegotiation, leave the drive jumper block set to “Normal operation” (see Figure 3 below), and connect the drive to that adapter. This option has the benefit of not limiting the drive to a 1.5 Gbits/sec transfer rate.



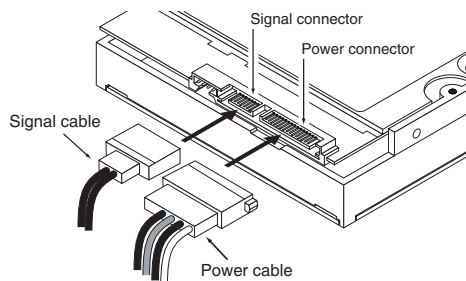
**Figure 3. Serial ATA connectors**

### 3.3 Serial ATA cables and connectors

The Serial ATA interface cable consists of four conductors in two differential pairs, plus three ground connections. The cable size may be 30 to 26 AWG with a maximum length of one meter (39.37 inches). See Table 15 for connector pin definitions. Either end of the SATA signal cable can be attached to the drive or host.

For direct backplane connection, the drive connectors are inserted directly into the host receptacle. The drive and the host receptacle incorporate features that enable the direct connection to be hot pluggable and blind mateable.

For installations which require cables, you can connect the drive as illustrated in Figure 4.



**Figure 4. Attaching SATA cabling**

Each cable is keyed to ensure correct orientation. Barracuda 7200.10 Serial ATA drives support latching SATA connectors.



### 3.4 Drive mounting

You can mount the drive in any orientation using four screws in the side-mounting holes or four screws in the bottom-mounting holes. See Figures 5 and 6 for drive mounting dimensions. Follow these important mounting precautions when mounting the drive:

- Allow a minimum clearance of 0.030 inches (0.76 mm) around the entire perimeter of the drive for cooling.
- Use only 6-32 UNC mounting screws.
- The screws should be inserted no more than 0.150 inch (3.81 mm) into the bottom or side mounting holes.
- Do not overtighten the mounting screws (maximum torque: 6 inch-lb).

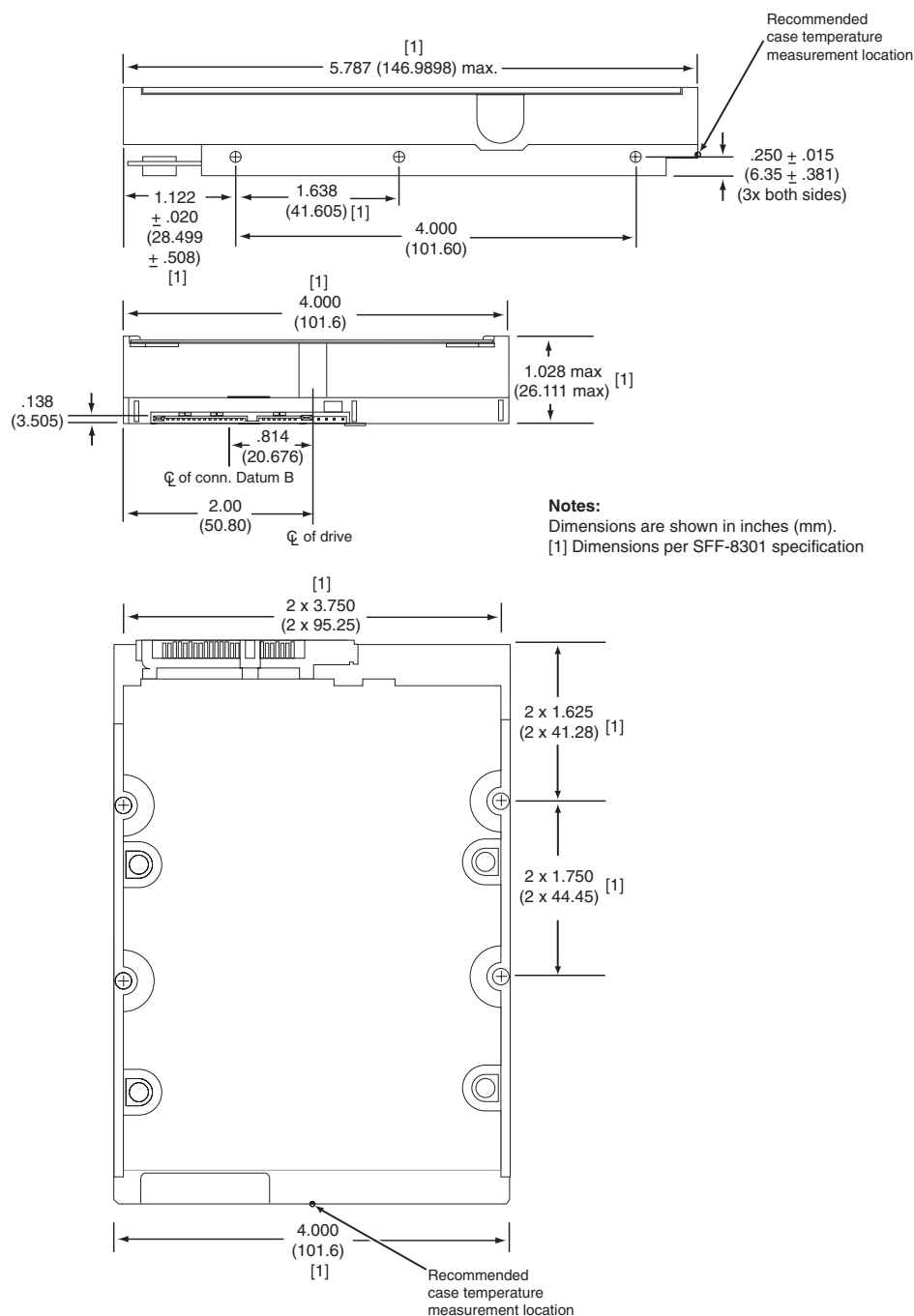


Figure 5. Mounting dimensions for 750-200 GB models (except ST3250410AS and ST3250310AS)

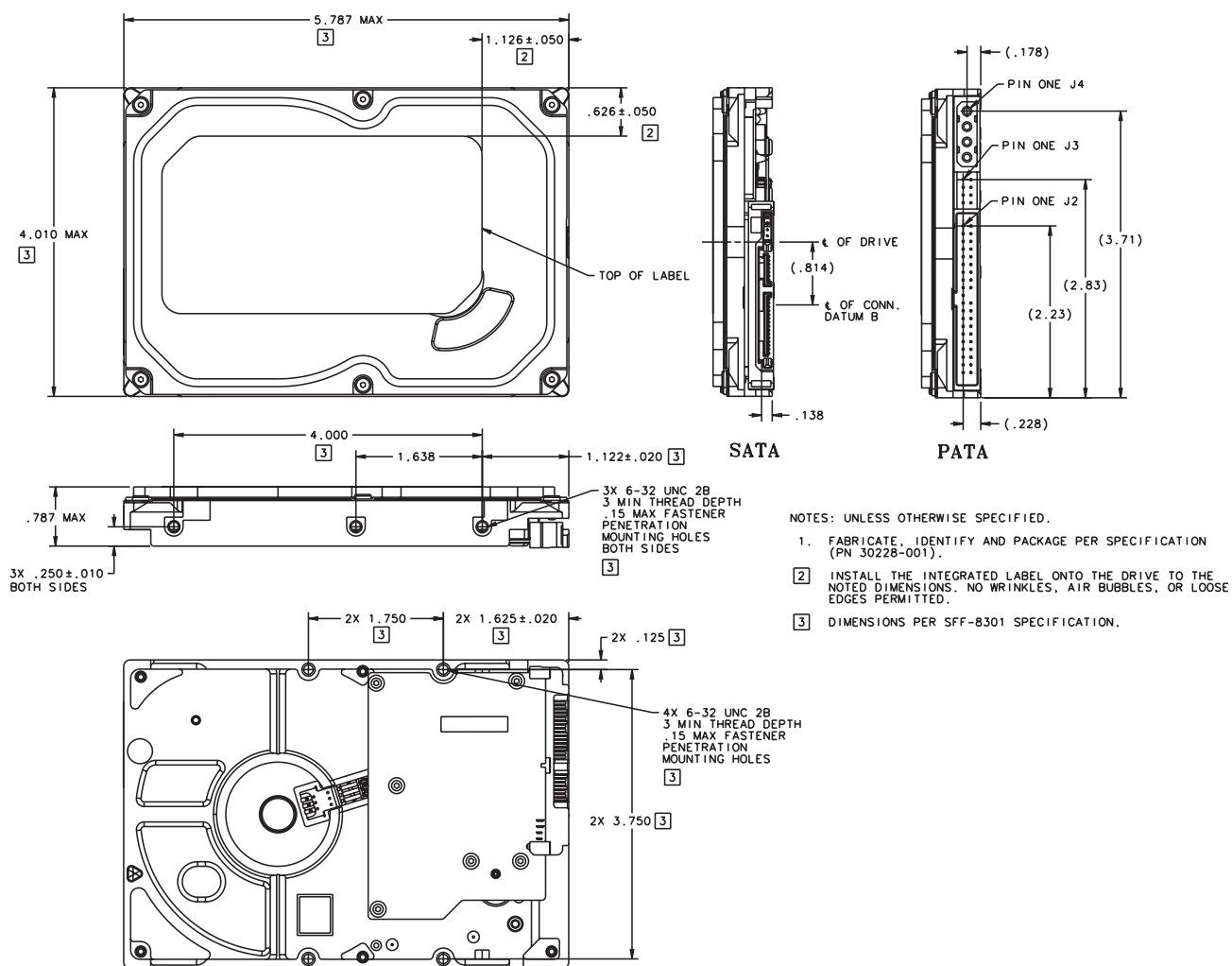


Figure 6. Mounting dimensions for 160-40 GB models (including ST3250410AS and ST3250310AS)

## **4.0 Serial ATA (SATA) interface**

---

These drives use the industry-standard Serial ATA interface that supports FIS data transfers. It supports ATA programmed input/output (PIO) modes 0–4; multiword DMA modes 0–2, and Ultra DMA modes 0–6.

For detailed information about the Serial ATA interface, refer to the “Serial ATA: High Speed Serialized AT Attachment” specification.

### **4.1 Hot-Plug compatibility**

Barracuda 7200.10 Serial ATA drives incorporate connectors which enable you to hot plug these drives in accordance with the Serial ATA Revision 2.5 specification. This specification can be downloaded from [www.serialata.org](http://www.serialata.org).

## 4.2 Serial ATA device plug connector pin definitions

Table 15 summarizes the signals on the Serial ATA interface and power connectors..

**Table 15: Serial ATA connector pin definitions**

Segment	Pin	Function	Definition
Signal	S1	Ground	2nd mate
	S2	A+	Differential signal pair A from Phy
	S3	A-	
	S4	Ground	2nd mate
	S5	B-	Differential signal pair B from Phy
	S6	B+	
	S7	Ground	2nd mate

Key and spacing separate signal and power segments

Power	P1	V <sub>33</sub>	3.3V power
	P2	V <sub>33</sub>	3.3V power
	P3	V <sub>33</sub>	3.3V power, pre-charge, 2nd mate
	P4	Ground	1st mate
	P5	Ground	2nd mate
	P6	Ground	2nd mate
	P7	V <sub>5</sub>	5V power, pre-charge, 2nd mate
	P8	V <sub>5</sub>	5V power
	P9	V <sub>5</sub>	5V power
	P10	Ground	2nd mate
	P11	Ground or LED signal	If grounded, drive does not use deferred spin
	P12	Ground	1st mate.
	P13	V <sub>12</sub>	12V power, pre-charge, 2nd mate
	P14	V <sub>12</sub>	12V power
	P15	V <sub>12</sub>	12V power

### Notes:

1. All pins are in a single row, with a 1.27 mm (0.050") pitch.
2. The comments on the mating sequence apply to the case of backplane blindmate connector only. In this case, the mating sequences are:
  - the ground pins P4 and P12.
  - the pre-charge power pins and the other ground pins.
  - the signal pins and the rest of the power pins.
3. There are three power pins for each voltage. One pin from each voltage is used for pre-charge when installed in a blind-mate backplane configuration.
4. All used voltage pins (V<sub>x</sub>) must be terminated.

### 4.3 Supported ATA commands

The following table lists Serial ATA standard commands that the drive supports. For a detailed description of the ATA commands, refer to the Serial ATA: High Speed Serialized AT Attachment specification. See “S.M.A.R.T. commands” on page 54 for details and subcommands used in the S.M.A.R.T. implementation.

**Table 16: Supported ATA commands**

Command name	Command code (in hex)
Check Power Mode	98 <sub>H</sub> or E5 <sub>H</sub>
Device Configuration Freeze Lock	B1 <sub>H</sub> / C1 <sub>H</sub>
Device Configuration Identify	B1 <sub>H</sub> / C2 <sub>H</sub>
Device Configuration Restore	B1 <sub>H</sub> / C0 <sub>H</sub>
Device Configuration Set	B1 <sub>H</sub> / C3 <sub>H</sub>
Device Reset	08 <sub>H</sub>
Download Microcode	92 <sub>H</sub>
Execute Device Diagnostics	90 <sub>H</sub>
Flush Cache	E7 <sub>H</sub>
Flush Cache Extended	EA <sub>H</sub>
Format Track	50 <sub>H</sub>
Identify Device	EC <sub>H</sub>
Idle	97 <sub>H</sub> or E3 <sub>H</sub>
Idle Immediate	95 <sub>H</sub> or E1 <sub>H</sub>
Initialize Device Parameters	91 <sub>H</sub>
Read Buffer	E4 <sub>H</sub>
Read DMA	C8 <sub>H</sub>
Read DMA Extended	25 <sub>H</sub>
Read DMA Without Retries	C9 <sub>H</sub>
Read Log Ext	2F <sub>H</sub>
Read Multiple	C4 <sub>H</sub>
Read Multiple Extended	29 <sub>H</sub>
Read Native Max Address	F8 <sub>H</sub>
Read Native Max Address Extended	27 <sub>H</sub>
Read Sectors	20 <sub>H</sub>
Read Sectors Extended	24 <sub>H</sub>
Read Sectors Without Retries	21 <sub>H</sub>
Read Verify Sectors	40 <sub>H</sub>
Read Verify Sectors Extended	42 <sub>H</sub>
Read Verify Sectors Without Retries	41 <sub>H</sub>
Recalibrate	10 <sub>H</sub>
Security Disable Password	F6 <sub>H</sub>
Security Erase Prepare	F3 <sub>H</sub>

Command name	Command code (in hex)
Security Erase Unit	F4 <sub>H</sub>
Security Freeze	F5 <sub>H</sub>
Security Set Password	F1 <sub>H</sub>
Security Unlock	F2 <sub>H</sub>
Seek	70 <sub>H</sub>
Set Features	EF <sub>H</sub>
Set Max Address  Note: Individual Set Max Address commands are identified by the value placed in the Set Max Features register as defined to the right.	F9 <sub>H</sub>  Address: 00 <sub>H</sub> Password: 01 <sub>H</sub> Lock: 02 <sub>H</sub> Unlock: 03 <sub>H</sub> Freeze Lock: 04 <sub>H</sub>
Set Max Address Extended	37 <sub>H</sub>
Set Multiple Mode	C6 <sub>H</sub>
Sleep	99 <sub>H</sub> or E6 <sub>H</sub>
S.M.A.R.T. Disable Operations	B0 <sub>H</sub> / D9 <sub>H</sub>
S.M.A.R.T. Enable/Disable Autosave	B0 <sub>H</sub> / D2 <sub>H</sub>
S.M.A.R.T. Enable Operations	B0 <sub>H</sub> / D8 <sub>H</sub>
S.M.A.R.T. Execute Offline	B0 <sub>H</sub> / D4 <sub>H</sub>
S.M.A.R.T. Read Attribute Thresholds	B0 <sub>H</sub> / D1 <sub>H</sub>
S.M.A.R.T. Read Data	B0 <sub>H</sub> / D0 <sub>H</sub>
S.M.A.R.T. Read Log Sector	B0 <sub>H</sub> / D5 <sub>H</sub>
S.M.A.R.T. Return Status	B0 <sub>H</sub> / DA <sub>H</sub>
S.M.A.R.T. Save Attribute Values	B0 <sub>H</sub> / D3 <sub>H</sub>
S.M.A.R.T. Write Log Sector	B0 <sub>H</sub> / D6 <sub>H</sub>
Standby	96 <sub>H</sub> or E2 <sub>H</sub>
Standby Immediate	94 <sub>H</sub> or E0 <sub>H</sub>
Write Buffer	E8 <sub>H</sub>
Write DMA	CA <sub>H</sub>
Write DMA Extended	35 <sub>H</sub>
Write DMA FUA Extended	CD <sub>H</sub>
Write DMA Without Retries	CB <sub>H</sub>
Write Log Extended	3F <sub>H</sub>
Write Multiple	C5 <sub>H</sub>
Write Multiple Extended	39 <sub>H</sub>
Write Multiple FUA Extended	CE <sub>H</sub>
Write Sectors	30 <sub>H</sub>
Write Sectors Without Retries	31 <sub>H</sub>
Write Sectors Extended	34 <sub>H</sub>

### 4.3.1 Identify Device command

The Identify Device command (command code EC<sub>H</sub>) transfers information about the drive to the host following power up. The data is organized as a single 512-byte block of data, whose contents are shown in Table 16 on page 47. All reserved bits or words should be set to zero. Parameters listed with an “x” are drive-specific or vary with the state of the drive. See Section 2.0 on page 3 for default parameter settings.

The following commands contain drive-specific features that may not be included in the Serial ATA specification.

Word	Description	Value
0	Configuration information: <ul style="list-style-type: none"><li>• Bit 15: 0 = ATA; 1 = ATAPI</li><li>• Bit 7: removable media</li><li>• Bit 6: removable controller</li><li>• Bit 0: reserved</li></ul>	0C5A <sub>H</sub>
1	Number of logical cylinders	16,383
2	ATA-reserved	0000 <sub>H</sub>
3	Number of logical heads	16
4	Retired	0000 <sub>H</sub>
5	Retired	0000 <sub>H</sub>
6	Number of logical sectors per logical track: 63	003F <sub>H</sub>
7–9	Retired	0000 <sub>H</sub>
10–19	Serial number: (20 ASCII characters, 0000 <sub>H</sub> = none)	ASCII
20	Retired	0000 <sub>H</sub>
21	Retired	0400 <sub>H</sub>
22	Obsolete	0000 <sub>H</sub>
23–26	Firmware revision (8 ASCII character string, padded with blanks to end of string)	x.xx
27–46	Drive model number: (40 ASCII characters, padded with blanks to end of string)	
47	(Bits 7–0) Maximum sectors per interrupt on Read multiple and Write multiple (16)	8010 <sub>H</sub>
48	Reserved	0000 <sub>H</sub>
49	Standard Standby timer, IORDY supported and may be disabled	2F00 <sub>H</sub>
50	ATA-reserved	0000 <sub>H</sub>
51	PIO data-transfer cycle timing mode	0200 <sub>H</sub>
52	Retired	0200 <sub>H</sub>
53	Words 54–58, 64–70 and 88 are valid	0007 <sub>H</sub>
54	Number of current logical cylinders	xxxx <sub>H</sub>
55	Number of current logical heads	xxxx <sub>H</sub>
56	Number of current logical sectors per logical track	xxxx <sub>H</sub>
57–58	Current capacity in sectors	xxxx <sub>H</sub>
59	Number of sectors transferred during a Read Multiple or Write Multiple command	xxxx <sub>H</sub>

Word	Description	Value
60–61	Total number of user-addressable LBA sectors available (see Section 2.2 for related information) *Note: The maximum value allowed in this field is: 0FFFFFFFh (268,435,455 sectors, 137 Gbytes). Drives with capacities over 137 Gbytes will have 0FFFFFFFh in this field and the actual number of user-addressable LBAs specified in words 100-103. This is required for drives that support the 48-bit addressing feature.	0FFFFFFFh*
62	Retired	0000 <sub>H</sub>
63	Multiword DMA active and modes supported (see note following this table)	xx07 <sub>H</sub>
64	Advanced PIO modes supported (modes 3 and 4 supported)	0003 <sub>H</sub>
65	Minimum multiword DMA transfer cycle time per word (120 nsec)	0078 <sub>H</sub>
66	Recommended multiword DMA transfer cycle time per word (120 nsec)	0078 <sub>H</sub>
67	Minimum PIO cycle time without IORDY flow control (240 nsec)	00F0 <sub>H</sub>
68	Minimum PIO cycle time with IORDY flow control (120 nsec)	0078 <sub>H</sub>
69–74	ATA-reserved	0000 <sub>H</sub>
75	Queue depth	0000 <sub>H</sub>
76	Serial ATA capabilities	xxxx <sub>H</sub>
77	Reserved for future Serial ATA definition	xxxx <sub>H</sub>
78	Serial ATA features supported	xxxx <sub>H</sub>
79	Serial ATA features enabled	xxxx <sub>H</sub>
80	Major version number	003E <sub>H</sub>
81	Minor version number	0000 <sub>H</sub>
82	Command sets supported	364B <sub>H</sub>
83	Command sets supported	7C03 <sub>H</sub>
84	Command sets support extension	4003 <sub>H</sub>
85	Command sets enabled	30xx <sub>H</sub>
86	Command sets enabled	0001 <sub>H</sub>
87	Command sets enable extension	4000 <sub>H</sub>
88	Ultra DMA support and current mode (see note following this table)	xx3F <sub>H</sub>
89	Security erase time	0000 <sub>H</sub>
90	Enhanced security erase time	0000 <sub>H</sub>
92	Master password revision code	FFFE <sub>H</sub>
93	Hardware reset value (see description following this table)	xxxx <sub>H</sub>
95–99	ATA-reserved	0000 <sub>H</sub>



Word	Description	Value
100–103	Total number of user-addressable LBA sectors available (see Section 2.2 for related information). These words are required for drives that support the 48-bit addressing feature. Maximum value: 0000FFFFFFFFFh.	ST3750640AS = 1,465,149,168 ST3750840AS = 1,465,149,168 ST3500630AS = 976,773,168 ST3500830AS = 976,773,168 ST3400620AS = 781,422,768 ST3400820AS = 781,422,768 ST3320620AS = 625,142,448 ST3320820AS = 625,142,448 ST3300620AS = 586,072,368 ST3300820AS = 586,072,368 ST3250620AS = 488,397,168 ST3250820AS = 488,397,168 ST3250410AS = 488,397,168 ST3250310AS = 488,397,168 ST3200820AS = 390,721,968 ST3160815AS = 312,581,808 ST3160310AS = 312,581,808 ST3160215AS = 312,581,808 ST3120815AS = 234,441,648 ST3120215AS = 234,441,648 ST380815AS = 156,301,488 ST380215AS = 156,301,488 ST340815AS = 78,165,360 ST340215AS = 78,165,360
104–127	ATA-reserved	0000 <sub>H</sub>
128	Security status	0001 <sub>H</sub>
129–159	Seagate-reserved	xxxx <sub>H</sub>
160–254	ATA-reserved	0000 <sub>H</sub>
255	Integrity word	xxA5 <sub>H</sub>

**Note.** Advanced Power Management (APM) and Automatic Acoustic Management (AAM) features are not supported

**Note.** See the bit descriptions below for words 63, 88, and 93 of the Identify Drive data.

Description (if bit is set to 1)		
	Bit	Word 63
	0	Multiword DMA mode 0 is supported.
	1	Multiword DMA mode 1 is supported.
	2	Multiword DMA mode 2 is supported.
	8	Multiword DMA mode 0 is currently active.
	9	Multiword DMA mode 1 is currently active.
	10	Multiword DMA mode 2 is currently active.
	Bit	Word 88
	0	Ultra DMA mode 0 is supported.
	1	Ultra DMA mode 1 is supported.
	2	Ultra DMA mode 2 is supported.
	3	Ultra DMA mode 3 is supported.
	4	Ultra DMA mode 4 is supported.
	5	Ultra DMA mode 5 is supported.
	6	Ultra DMA mode 6 is supported.
	8	Ultra DMA mode 0 is currently active.
	9	Ultra DMA mode 1 is currently active.
	10	Ultra DMA mode 2 is currently active.
	11	Ultra DMA mode 3 is currently active.
	12	Ultra DMA mode 4 is currently active.
	13	Ultra DMA mode 5 is currently active.
	14	Ultra DMA mode 6 is currently active.

### 4.3.2 Set Features command

This command controls the implementation of various features that the drive supports. When the drive receives this command, it sets BSY, checks the contents of the Features register, clears BSY and generates an interrupt. If the value in the register does not represent a feature that the drive supports, the command is aborted. Power-on default has the read look-ahead and write caching features enabled. The acceptable values for the Features register are defined as follows:

**Table 17: Set Features command values**

02 <sub>H</sub>	Enable write cache ( <i>default</i> ).
03 <sub>H</sub>	Set transfer mode (based on value in Sector Count register). Sector Count register values:
00 <sub>H</sub>	Set PIO mode to default (PIO mode 2).
01 <sub>H</sub>	Set PIO mode to default and disable IORDY (PIO mode 2).
08 <sub>H</sub>	PIO mode 0
09 <sub>H</sub>	PIO mode 1
0A <sub>H</sub>	PIO mode 2
0B <sub>H</sub>	PIO mode 3
0C <sub>H</sub>	PIO mode 4 ( <i>default</i> )
20 <sub>H</sub>	Multiword DMA mode 0
21 <sub>H</sub>	Multiword DMA mode 1
22 <sub>H</sub>	Multiword DMA mode 2
40 <sub>H</sub>	Ultra DMA mode 0
41 <sub>H</sub>	Ultra DMA mode 1
42 <sub>H</sub>	Ultra DMA mode 2
43 <sub>H</sub>	Ultra DMA mode 3
44 <sub>H</sub>	Ultra DMA mode 4
45 <sub>H</sub>	Ultra DMA mode 5
46 <sub>H</sub>	Ultra DMA mode 6
10 <sub>H</sub>	Enable use of SATA features
55 <sub>H</sub>	Disable read look-ahead (read cache) feature.
82 <sub>H</sub>	Disable write cache
90 <sub>H</sub>	Disable use of SATA features
AA <sub>H</sub>	Enable read look-ahead (read cache) feature ( <i>default</i> ).
F1 <sub>H</sub>	Report full capacity available

**Note.** At power-on, or after a hardware or software reset, the default values of the features are as indicated above.

### 4.3.3 S.M.A.R.T. commands

S.M.A.R.T. provides near-term failure prediction for disc drives. When S.M.A.R.T. is enabled, the drive monitors predetermined drive attributes that are susceptible to degradation over time. If self-monitoring determines that a failure is likely, S.M.A.R.T. makes a status report available to the host. Not all failures are predictable. S.M.A.R.T. predictability is limited to the attributes the drive can monitor. For more information on S.M.A.R.T. commands and implementation, see the *Draft ATA-5 Standard*.

SeaTools diagnostic software activates a built-in drive self-test (DST S.M.A.R.T. command for D4<sub>H</sub>) that eliminates unnecessary drive returns. The diagnostic software ships with all new drives and is also available at: <http://seatools.seagate.com>.

This drive is shipped with S.M.A.R.T. features disabled. You must have a recent BIOS or software package that supports S.M.A.R.T. to enable this feature. The table below shows the S.M.A.R.T. command codes that the drive uses.

**Table 18: S.M.A.R.T. commands**

Code in features register	S.M.A.R.T. command
D0 <sub>H</sub>	S.M.A.R.T. Read Data
D2 <sub>H</sub>	S.M.A.R.T. Enable/Disable Attribute Autosave
D3 <sub>H</sub>	S.M.A.R.T. Save Attribute Values
D4 <sub>H</sub>	S.M.A.R.T. Execute Off-line Immediate (runs DST)
D5 <sub>H</sub>	S.M.A.R.T. Read Log Sector
D6 <sub>H</sub>	S.M.A.R.T. Write Log Sector
D8 <sub>H</sub>	S.M.A.R.T. Enable Operations
D9 <sub>H</sub>	S.M.A.R.T. Disable Operations
DA <sub>H</sub>	S.M.A.R.T. Return Status

**Note.** If an appropriate code is not written to the Features Register, the command is aborted and 0x04 (abort) is written to the Error register.

## 5.0 Seagate Technology support services

---

### Online services

#### Internet

For information regarding Seagate products and services, visit [www.seagate.com](http://www.seagate.com). Worldwide support is available 24 hours daily by email for your questions.

#### Presales Support:

[Presales@Seagate.com](mailto:Presales@Seagate.com)

#### Technical Support:

[DiscSupport@Seagate.com](mailto:DiscSupport@Seagate.com)

#### Warranty Support:

<http://www.seagate.com/support/service/index.html>

#### mySeagate

[my.seagate.com](http://my.seagate.com) is the industry's first Web portal designed specifically for OEMs and distributors. It provides self-service access to critical applications, personalized content and the tools that allow our partners to manage their Seagate account functions. Submit pricing requests, orders and returns through a single, password-protected Web interface-anytime, anywhere in the world.

#### spp.seagate.com

[spp.seagate.com](http://spp.seagate.com) supports Seagate resellers with product information, program benefits and sales tools. You may register for customized communications that are not available on the web. These communications contain product launch, EOL, pricing, promotions and other channel-related information. To learn more about the benefits or to register, go to [spp.seagate.com](http://spp.seagate.com), any time, from anywhere in the world.

### Seagate Service Centers

#### Presales Support

Our Presales Support staff can help you determine which Seagate products are best suited for your specific application or computer system, as well as product availability and compatibility.

#### Technical Support

Seagate technical support is available to assist you online at [support.seagate.com](http://support.seagate.com) or through one of our call centers. Have your system configuration information and your "ST" model number available.

**SeaTDD™ (+1-405-324-3655)** is a telecommunications device for the deaf (TDD). You can send questions or comments 24 hours daily and exchange messages with a technical support specialist during normal business hours for the call center in your region.

# Customer Service Operations

## Warranty Service

Seagate offers worldwide customer support for Seagate products. Seagate distributors, OEMs and other direct customers should contact their Seagate Customer Service Operations (CSO) representative for warranty-related issues. Resellers or end users of drive products should contact their place of purchase or Seagate warranty service for assistance. Have your serial number and model or part number available.

## Data Recovery Services

Seagate offers data recovery services for all formats and all brands of storage media. Our data recovery services labs are currently located throughout the world. . Additional information, including an online request form and data loss prevention resources, is available at <http://services.seagate.com/index.aspx>

## Authorized Service Centers

Seagate Service Centers are available on a global basis for the return of defective products. Contact your customer support representative for the location nearest you.

## USA/Canada/Latin America support services

For an extensive list of telephone numbers to technical support, presales and warranty service in USA/Canada/Latin America, including business hours, go to the "Contact Us" page on [www.seagate.com](http://www.seagate.com).

## Global Customer Support

### Presales, Technical, and Warranty Support

Call Center	Toll-free	Direct dial
USA, Canada, and Mexico	1-800-SEAGATE	+1-405-324-4700

### Data Recovery Services

Call Center	Toll-free	Direct dial	FAX
USA, Canada, and Mexico	1-800-475-01435	+1-905-474-2162	1-800-475-0158 +1-905-474-2459

## Europe, the Middle East and Africa Support Services

For an extensive list of telephone numbers to technical support, presales and warranty service in Europe, the Middle East and Africa, go to the "Contact Us" page on [www.seagate.com](http://www.seagate.com).

## Asia/Pacific Support Services

For an extensive list of telephone numbers to technical support, presales and warranty service in Asia/Pacific, go to the "Contact Us" page on [www.seagate.com](http://www.seagate.com).

## Publication feedback survey

We are interested in your comments and suggestions regarding this publication. Please take a few minutes to participate in our survey at the following URL:

<http://survey.seagate.com/survey/techpubs.nsf>

Thank you for your time and comments.

# Index

## A

- ACA 38
- acceleration 34
- acoustics 35
- Active 32
- Active mode 32
- actuator arm 30
- AFR 37
- Agency certification 37
- altitude 33
- Ambient temperature 33
- ambient temperature 29, 30
- Annualized Failure Rate 37
- Annualized Failure Rate (AFR) 37
- areal density 1, 27
- ATA commands 47
- Australia/New Zealand Standard AS/NZS3548 1995 38
- Australian Communication Authority (ACA) 38
- Australian C-Tick 38
- Average latency 29
- Average seek time 29

## B

- buffer 28

## C

- cables and connectors 42
- cache 28
- capacity 26
- case temperature 33
- CE mark 37
- certification 37
- Check Power Mode 47
- China RoHS directive 39
- compatibility 37
- Conducted noise 31
- Conducted RF immunity 36
- Configuring the drive 41
- connectors 42
- Corrosive environment 39
- CSA C22.2 (950) 37
- cycles 37
- Cylinders 26

## D

- data-transfer rates 1
- DC power 30
- Default logical geometry 26
- density 27

- Device Configuration Freeze Lock 47
- Device Configuration Identify 47
- Device Configuration Restore 47
- Device Configuration Set 47
- Device Reset 47
- dimensions 43, 44
- disc surface 30
- dissipation 30
- Download Microcode 47
- duty cycle 37

## E

- Electrical fast transient 36
- Electromagnetic compatibility 37
- Electromagnetic Compatibility (EMC) 38
- Electromagnetic Compatibility control Regulation 38
- Electromagnetic Compatibility Directive (89/336/EEC) 37
- Electromagnetic immunity 36
- Electrostatic discharge 36
- electrostatic discharge (ESD) 41
- EN 55022, Class B 37
- EN 55024 37
- EN 60950 37
- enclosures 38
- Environmental specifications 33
- error-correction algorithms 1
- errors 37
- ESD 41
- EU 37
- EU RoHS directive 39
- European Union (EU) requirements 37
- Execute Device Diagnostics 47

## F

- FCC verification 38
- features 1
- Flush Cache 47
- Flush Cache Extended 47
- Format Track 47
- Formatted capacity 26

## G

- geometry 26
- Gs 34
- guaranteed sectors 26

## H

- Handling precautions 41
- heads 26
- height 28
- humidity 33

## I

- I/O data-transfer rate 27
- I/O duty cycle 37
- Identify Device 47
- Identify Device command 49
- Idle 32, 47
- Idle Immediate 47
- Idle mode 30, 32
- IEC950 37
- Information Technology Equipment (ITE) 37
- Initialize Device Parameters 47
- Input noise ripple 31
- input voltage 30
- interface 27, 45
- interference 38
- internal data-transfer rate OD 27
- is 29
- ISO document 7779 35
- ITE 37

## K

- Korea Ministry of Information and Communication (MIC) 38
- Korean RRL 38

## L

- latency 29
- latency time 30
- LBA mode 26
- length 28
- logical geometry 26

## M

- maintenance 37
- master/slave 2
- maximum temperature 33
- Mean Time Between Failures 37
- MIC 38
- mounting 43
- mounting screws 33
- mounting the drive 41
- MTBF 37

## N

- noise 31
- nominal power 29
- Nonoperating shock 34
- Nonoperating vibration 34
- Nonrecoverable read errors 37

## O

- operating 30

- Operating power 30
- Operating shock 33
- Operating vibration 34

## P

- Physical characteristics 28
- point-to-point 2, 42
- Power consumption 30
- power consumption 30
- power dissipation 30
- Power modes 32
- Power specifications 30
- Power-management modes 32
- Power-on to Ready 29
- power-on-hours 37
- precautions 41
- printed circuit board 41
- programmable power management 32

## Q

- quick reference 3

## R

- Radiated RF immunity 36
- radio and television interference 38
- radio frequency (RF) 36
- random seeks 30
- Read Buffer 47
- Read DMA 47
- Read DMA Extended 47
- Read DMA without Retries 47
- read errors 37
- Read Log Ext 47
- Read Multiple 47
- Read Multiple Extended 47
- Read Native Max Address 47
- Read Native Max Address Extended 47
- Read Sectors 47
- Read Sectors Extended 47
- Read Sectors Without Retries 47
- Read Verify Sectors 47
- Read Verify Sectors Extended 47
- Read Verify Sectors Without Retries 47
- read/write actuator arm 30
- Read/write heads 26
- Read/write power 30
- Recalibrate 47
- recording density 27
- recording method 27
- Recording technology 27
- relative humidity 33
- Reliability 37
- RF 36
- RMS read/write current 31



RoHS 39  
RRL 38

## S

S.M.A.R.T. Disable Operations 48  
S.M.A.R.T. Enable Operations 48  
S.M.A.R.T. Enable/Disable Autosave 48  
S.M.A.R.T. Execute Offline 48  
S.M.A.R.T. implementation 47  
S.M.A.R.T. Read Attribute Thresholds 48  
S.M.A.R.T. Read Data 48  
S.M.A.R.T. Read Log Sector 48  
S.M.A.R.T. Return Status 48  
S.M.A.R.T. Save Attribute Values 48  
S.M.A.R.T. Write Log sector 48  
Safety certification 37  
SATA 45  
screws 33  
sectors 26  
Sectors per track 26  
Security Disable Password 47  
Security Erase Prepare 47  
Security Erase Unit 48  
Security Freeze 48  
Security Set Password 48  
Security Unlock 48  
Seek 48  
seek mode 30  
Seek mode power 30  
Seek time 29  
Seeking 30  
Serial ATA (SATA) interface 45  
serial ATA ports 2  
Servo electronics 30  
servo electronics 30  
Set Features 48  
Set Max Address 48  
Set Max Address Extended 48  
Set Multiple Mode 48  
Shock 33  
single-track seeks 29  
Sleep 30, 32, 48  
Sleep mode 32  
sound 35  
Specification summary table 3  
spindle speed 27  
Spinup 30  
Spinup power 30  
Standby 30, 32, 48  
Standby Immediate 48  
Standby mode 30, 32  
standby timer 32  
Standby to Ready 29  
Start/stop times 29  
start-stop cycles 37

static-discharge 41  
subassembly 38  
support services 55  
Surge immunity 36

## T

technical support services 55  
temperature 29, 33  
temperature gradient 33  
timer 32  
timers 32  
track density 27  
Track-to-track 29  
Track-to-track seek time 29

## U

UL 1950 37

## V

Vibration 34  
voltage 30  
Voltage dips, interrupts 36  
Voltage tolerance 31

## W

Warranty 37  
weight 28  
wet bulb temperature 33  
width 28  
Write Buffer 48  
Write DMA 48  
Write DMA Extended 48  
Write DMA FUA Extended 48  
Write DMA Without Retries 48  
Write Log Extended 48  
Write Multiple 48  
Write Multiple Extended 48  
Write Multiple FUA Extended 48  
Write Sectors 48  
Write Sectors Extended 48  
Write Sectors Without Retries 48







**Seagate Technology LLC**  
**920 Disc Drive, Scotts Valley, California 95066-4544, USA**  
*Publication Number: 100402371, Rev. K, Printed in U.S.A.*